

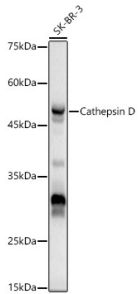
## Anti-Cathepsin D Antibody (A89998)

### Specifications:

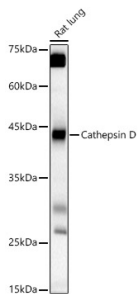
Name:	Anti-Cathepsin D Antibody
Description:	Rabbit polyclonal antibody to Cathepsin D.
Applications:	WB, IHC
Recommended Dilutions:	WB: 1:100-1:500, IHC: 1:50-1:200
Reactivity:	Human, Mouse, Rat
Immunogen:	Recombinant fusion protein containing a sequence corresponding to amino acids 21-249 of human Cathepsin D (NP_001900.1).
Sequence:	LVRIPLHKFTSIRRTMSEVGGSVEDLIAKGPVSKYSQAVPAVTEGPIPEVLKNYMDAQ YYGEIGIGTPPQCFTVVFDTGSSNLWVPSIHCKLLDIACWIHHKYNSDKSSTYVKNGT SFDIHYGSGSLSGYLSQDTVSVPCQSASSASALGGVKVERQVFGAATKQPGITFIAAK FDGILGMAYPRISVNNVLPVFDNLMQQKLVDQNIFSFYLSRDPDAQPGGELMLGG
Host:	Rabbit
Clonality:	Polyclonal
Isotype:	IgG
Conjugate:	Unconjugated
Purification:	Affinity purification.
Molecular Weight:	46 kDa
Product Form:	Liquid
Formulation:	Supplied in Phosphate Buffered Saline, pH 7.3, with 50% Glycerol and 0.01% Thiomersal.
Storage:	Shipped at 4°C. Upon delivery aliquot and store at -20°C. Avoid freeze / thaw cycles.
Disclaimer:	This product is for research use only. It is not intended for diagnostic or therapeutic use.

## Anti-Cathepsin D Antibody (A89998)

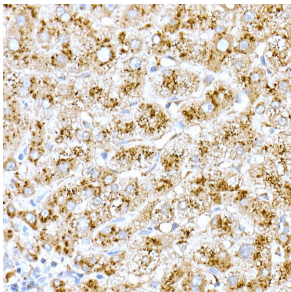
### Images:



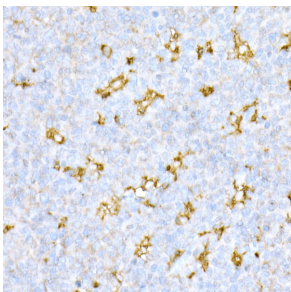
Western blot analysis of SK-BR-3, using Anti-Cathepsin D Antibody (A89998) at 1:500 dilution. The secondary antibody was Goat Anti-Rabbit IgG H&L Antibody (HRP) at 1:10,000 dilution. Lysates/proteins were present at 25 $\mu$ g per lane. The blocking buffer used was 3% non-fat dry milk in TBST. Detection was with a ECL Basic Kit. Exposure time: 10s.



Western blot analysis of Rat lung, using Anti-Cathepsin D Antibody (A89998) at 1:500 dilution. The secondary antibody was Goat Anti-Rabbit IgG H&L Antibody (HRP) at 1:10,000 dilution. Lysates/proteins were present at 25 $\mu$ g per lane. The blocking buffer used was 3% non-fat dry milk in TBST. Detection was with a ECL Basic Kit. Exposure time: 30s.



Immunohistochemistry analysis of paraffin-embedded human liver using Anti-Cathepsin D Antibody (A89998) at a dilution of 1:20 (40x lens). Perform high pressure antigen retrieval with 10 mM citrate buffer pH 6.0 before commencing with IHC staining protocol.



Immunohistochemistry analysis of paraffin-embedded human tonsil using Anti-Cathepsin D Antibody (A89998) at a dilution of 1:20 (40x lens). Perform high pressure antigen retrieval with 10 mM citrate buffer pH 6.0 before commencing with IHC staining protocol.