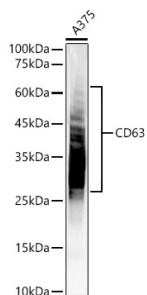


Anti-CD63 Antibody (A9694)

Specifications:

Name:	Anti-CD63 Antibody
Description:	Rabbit polyclonal antibody to CD63.
Applications:	WB, IHC
Recommended Dilutions:	WB: 1:500-1:1,000, IHC: 1:50-1:200
Reactivity:	Human, Mouse, Rat
Immunogen:	Recombinant fusion protein containing a sequence corresponding to amino acids 103-203 of human CD63 (NP_001771.1).
Sequence:	AGYVFRDKVMSEFNNNFRQQMENYPKNNHTASILDRMQADFKCCGAANYTDWEKIPSM SKNRVPDSCCINVTVGCGINFNEKAIHKEGCVEKIGGWLRKNV
Host:	Rabbit
Clonality:	Polyclonal
Isotype:	IgG
Conjugate:	Unconjugated
Purification:	Affinity purification.
Molecular Weight:	30 - 65 kDa
Product Form:	Liquid
Formulation:	Supplied in Phosphate Buffered Saline, pH 7.3, with 50% Glycerol and 0.05% Proclin 300.
Storage:	Shipped at 4°C. Upon delivery aliquot and store at -20°C. Avoid freeze / thaw cycles.
Disclaimer:	This product is for research use only. It is not intended for diagnostic or therapeutic use.

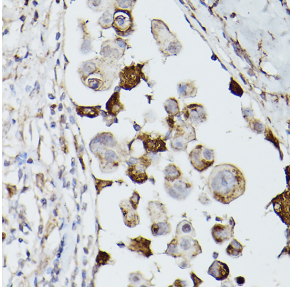
Images:



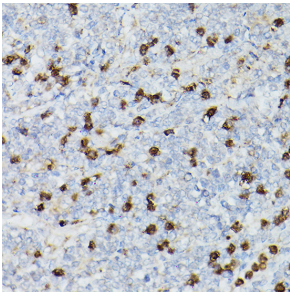
Western blot analysis of A375, using Anti-CD63 Antibody (A9694) at 1:700 dilution. The secondary antibody was Goat Anti-Rabbit IgG H&L Antibody (HRP) at 1:10,000 dilution. Lysates/proteins were present at 25µg per lane. The blocking buffer used was 3% non-fat dry milk in TBST. Detection was with a ECL Basic Kit. Exposure time: 30s.

Anti-CD63 Antibody (A9694)

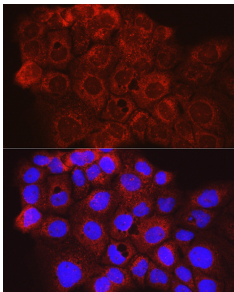
Images continued:



Immunohistochemistry analysis of paraffin-embedded human breast cancer tissue using Anti-CD63 Antibody (A9694) at a dilution of 1:100 (40x lens). Perform high pressure antigen retrieval with 10 mM citrate buffer pH 6.0 before commencing with IHC staining protocol.



Immunohistochemistry analysis of paraffin-embedded human lymphoma using Anti-CD63 Antibody (A9694) at a dilution of 1:100 (40x lens). Perform high pressure antigen retrieval with 10 mM citrate buffer pH 6.0 before commencing with IHC staining protocol.



Immunofluorescence analysis of A431 cells using Anti-CD63 Antibody (A9694) at a dilution of 1:100 (40x lens). DAPI was used to stain the cell nuclei (blue).