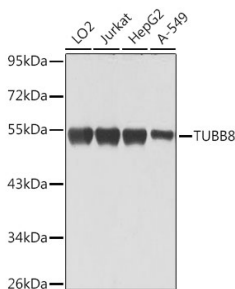


Anti-TUBB8 Antibody (A90398)

Specifications:

Name:	Anti-TUBB8 Antibody
Description:	Rabbit polyclonal antibody to TUBB8.
Applications:	WB, ICC/IF
Recommended Dilutions:	WB: 1:500-1:1,000, ICC/IF: 1:50-1:200
Reactivity:	Human
Immunogen:	A synthetic peptide of human TUBB8.
Host:	Rabbit
Clonality:	Polyclonal
Isotype:	IgG
Conjugate:	Unconjugated
Purification:	Affinity purification.
Molecular Weight:	55 kDa
Product Form:	Liquid
Formulation:	Supplied in Phosphate Buffered Saline, pH 7.3, with 50% Glycerol and 0.02% Sodium Azide.
Storage:	Shipped at 4°C. Upon delivery aliquot and store at -20°C. Avoid freeze / thaw cycles.
Disclaimer:	This product is for research use only. It is not intended for diagnostic or therapeutic use.

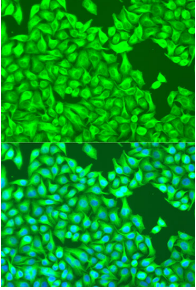
Images:



Western blot analysis of extracts of various cell lines, using Anti-TUBB8 Antibody (A90398) at 1:1,000 dilution. The secondary antibody was Goat Anti-Rabbit IgG H&L Antibody (HRP) at 1:10,000 dilution. Lysates/proteins were present at 25µg per lane. The blocking buffer used was 3% non-fat dry milk in TBST. Detection was with a ECL Basic Kit. Exposure time: 1s.

Anti-TUBB8 Antibody (A90398)

Images continued:



Immunofluorescence analysis of U2OS cells using Anti-TUBB8 Antibody (A90398) at a dilution of 1:100. DAPI was used to stain the cell nuclei (blue).