

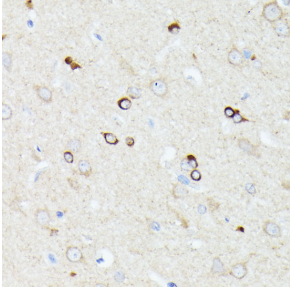
Anti-CCDC6 Antibody (A90564)

Specifications:

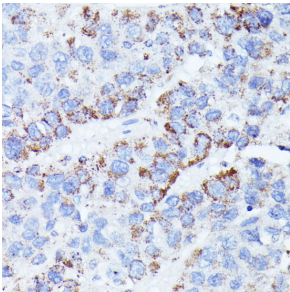
| | |
|------------------------|---|
| Name: | Anti-CCDC6 Antibody |
| Description: | Rabbit polyclonal antibody to CCDC6. |
| Applications: | WB, IHC, ICC/IF |
| Recommended Dilutions: | WB: 1:500-1:2,000, IHC: 1:50-1:200, ICC/IF: 1:50-1:200 |
| Reactivity: | Human, Mouse, Rat |
| Immunogen: | Recombinant fusion protein containing a sequence corresponding to amino acids 55-222 of human CCDC6 (NP_005427.2). |
| Sequence: | RLEELTNRLASLQQENKVLKIELETYKCLKCKALQEENRDLRKASVTIQARAEQEEEFI SNTLFKKIQALQKEKETLAVNYEKEEEFLTNELSRKLMQLQHEKAELEQHLEQEQEFQ VNKLMKKIKKLENDTISKQLTLEQLRREKIDLENTLEQEALVNRLWKRMD |
| Host: | Rabbit |
| Clonality: | Polyclonal |
| Isotype: | IgG |
| Conjugate: | Unconjugated |
| Purification: | Affinity purification. |
| Molecular Weight: | 56 kDa |
| Product Form: | Liquid |
| Formulation: | Supplied in Phosphate Buffered Saline, pH 7.3, with 50% Glycerol and 0.01% Thiomersal. |
| Storage: | Shipped at 4°C. Upon delivery aliquot and store at -20°C. Avoid freeze / thaw cycles. |
| Disclaimer: | This product is for research use only. It is not intended for diagnostic or therapeutic use. |

Anti-CCDC6 Antibody (A90564)

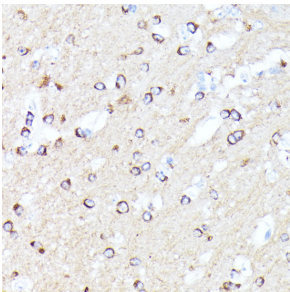
Images:



Immunohistochemistry analysis of paraffin-embedded rat brain using Anti-CCDC6 Antibody (A90564) at a dilution of 1:100 (40x lens). Perform microwave antigen retrieval with 10 mM PBS buffer pH 7.2 before commencing with IHC staining protocol.



Immunohistochemistry analysis of paraffin-embedded human liver cancer using Anti-CCDC6 Antibody (A90564) at a dilution of 1:100 (40x lens). Perform microwave antigen retrieval with 10 mM PBS buffer pH 7.2 before commencing with IHC staining protocol.



Immunohistochemistry analysis of paraffin-embedded mouse brain using Anti-CCDC6 Antibody (A90564) at a dilution of 1:100 (40x lens). Perform microwave antigen retrieval with 10 mM PBS buffer pH 7.2 before commencing with IHC staining protocol.