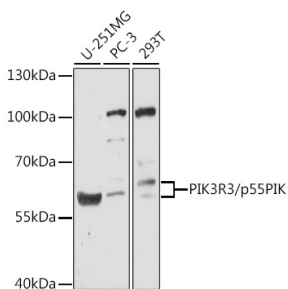


## Anti-PI 3 Kinase p55 gamma Antibody (A90721)

### Specifications:

Name:	Anti-PI 3 Kinase p55 gamma Antibody
Description:	Rabbit polyclonal antibody to PI 3 Kinase p55 gamma.
Applications:	WB, IHC, ICC/IF
Recommended Dilutions:	WB: 1:500-1:1,000, IHC: 1:50-1:100, ICC/IF: 1:50-1:100
Reactivity:	Human, Mouse
Immunogen:	Recombinant fusion protein containing a sequence corresponding to amino acids 300-388 of human PIK3R3/p55PIK (NP_003620.3).
Sequence:	PDLIQLRKIRDQHLVWLNHKGVRQKRLNVWLGKKNEDADENYFINEEDENLPHYDEKT WFVEDINRVQAEDLLYGKPDGAFLIRESSKK
Host:	Rabbit
Clonality:	Polyclonal
Isotype:	IgG
Conjugate:	Unconjugated
Purification:	Affinity purification.
Molecular Weight:	60 kDa
Product Form:	Liquid
Formulation:	Supplied in Phosphate Buffered Saline, pH 7.3, with 50% Glycerol and 0.01% Thiomersal.
Storage:	Shipped at 4°C. Upon delivery aliquot and store at -20°C. Avoid freeze / thaw cycles.
Disclaimer:	This product is for research use only. It is not intended for diagnostic or therapeutic use.

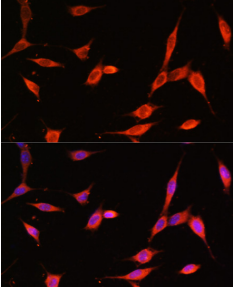
### Images:



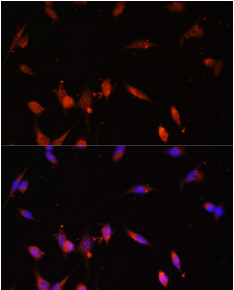
Western blot analysis of extracts of various cell lines, using Anti-PI 3 Kinase p55 gamma Antibody (A90721) at 1:1,000 dilution. The secondary antibody was Goat Anti-Rabbit IgG H&L Antibody (HRP) at 1:10,000 dilution. Lysates/proteins were present at 25µg per lane. The blocking buffer used was 3% non-fat dry milk in TBST. Detection was with a ECL Basic Kit. Exposure time: 90s.

## Anti-PI 3 Kinase p55 gamma Antibody (A90721)

Images continued:



Immunofluorescence analysis of NIH-3T3 cells using Anti-PI 3 Kinase p55 gamma Antibody (A90721) at a dilution of 1:100. DAPI was used to stain the cell nuclei (blue).



Immunofluorescence analysis of NIH-3T3 cells using Anti-PI 3 Kinase p55 gamma Antibody (A90721) at a dilution of 1:100. DAPI was used to stain the cell nuclei (blue).