

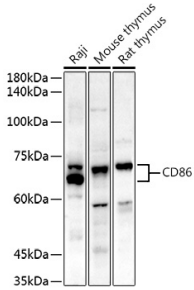
Anti-CD86 Antibody (A91282)

Specifications:

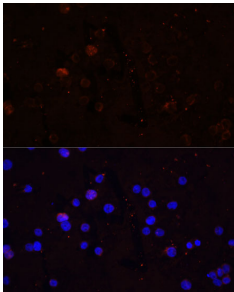
Name:	Anti-CD86 Antibody
Description:	Rabbit polyclonal antibody to CD86.
Applications:	WB, ICC/IF, IP
Recommended Dilutions:	WB: 1:100-1:500, ICC/IF: 1:50-1:200, IP: 1:50-1:200
Reactivity:	Human, Mouse, Rat
Immunogen:	Recombinant fusion protein containing a sequence corresponding to amino acids 24-247 of human CD86 (NP_787058.4).
Sequence:	APLKIQAYFNETADLPCQFANSQSQSLSELVFWQDQENLVLNEVYLGKEKFDSVHSK YMGRTSFDSDSWTLRLHNLQIKDKGLYQCIHHKKPTGMIRIHQMNSELSVLANFSQP EIVPISNITENVYINLTCSSIHGYPEPKMSVLLRRTKNSTIEYDGIMQKSQDNVTELY DVSISLSVSFPDVTSNMTIFCILETDKTRLLSSPFSIELEDPQPPPDHIP
Host:	Rabbit
Clonality:	Polyclonal
Isotype:	IgG
Conjugate:	Unconjugated
Purification:	Affinity purification.
Molecular Weight:	65 - 70 kDa
Product Form:	Liquid
Formulation:	Supplied in Phosphate Buffered Saline, pH 7.3, with 50% Glycerol and 0.05% Proclin 300.
Storage:	Shipped at 4°C. Upon delivery aliquot and store at -20°C. Avoid freeze / thaw cycles.
Disclaimer:	This product is for research use only. It is not intended for diagnostic or therapeutic use.

Anti-CD86 Antibody (A91282)

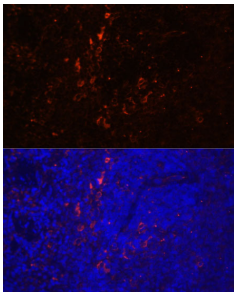
Images:



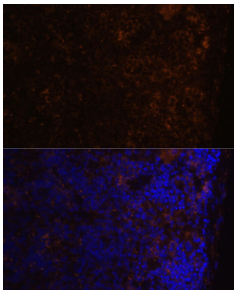
Western blot analysis of extracts of various cell lines, using Anti-CD86 Antibody (A91282) at 1:500 dilution. The secondary antibody was Goat Anti-Rabbit IgG H&L Antibody (HRP) at 1:10,000 dilution. Lysates/proteins were present at 25 μ g per lane. The blocking buffer used was 3% non-fat dry milk in TBST. Detection was with a ECL Enhanced Kit (RM00021). Exposure time: 90s.



Immunofluorescence analysis of THP-1 cells using Anti-CD86 Antibody (A91282) at a dilution of 1:100 (40x lens). DAPI was used to stain the cell nuclei (blue).



Immunofluorescence analysis of rat spleen using Anti-CD86 Antibody (A91282) at a dilution of 1:100 (40x lens). DAPI was used to stain the cell nuclei (blue).



Immunofluorescence analysis of mouse spleen using Anti-CD86 Antibody (A91282) at a dilution of 1:100 (40x lens). DAPI was used to stain the cell nuclei (blue).