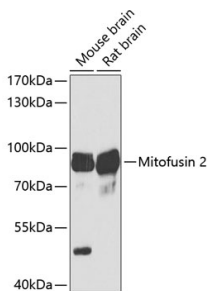


## Anti-Mitofusin 2 Antibody (A91370)

### Specifications:

Name:	Anti-Mitofusin 2 Antibody
Description:	Rabbit polyclonal antibody to Mitofusin 2.
Applications:	WB, IHC
Recommended Dilutions:	WB: 1:500-1:2,000, IHC: 1:50-1:200
Reactivity:	Human, Mouse, Rat
Immunogen:	Recombinant fusion protein containing a sequence corresponding to amino acids 687-757 of mouse Mitofusin 2 (NP_573464.2).
Sequence:	QVQQELSGTFAHLCQQVDITRDNLEQEIAAMNKKVEALDSLQSRAKLLRNKAGWLDSE LNMFTHQYLQPSR
Host:	Rabbit
Clonality:	Polyclonal
Isotype:	IgG
Conjugate:	Unconjugated
Purification:	Affinity purification.
Molecular Weight:	86 kDa
Product Form:	Liquid
Formulation:	Supplied in Phosphate Buffered Saline, pH 7.3, with 50% Glycerol and 0.05% Proclin 300.
Storage:	Shipped at 4°C. Upon delivery aliquot and store at -20°C. Avoid freeze / thaw cycles.
Disclaimer:	This product is for research use only. It is not intended for diagnostic or therapeutic use.

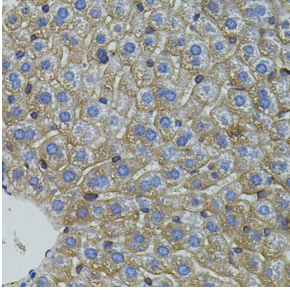
### Images:



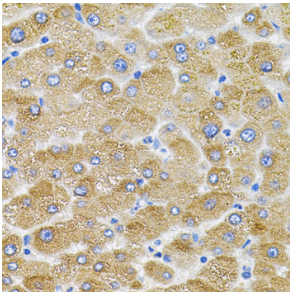
Western blot analysis of extracts of various cell lines, using Anti-Mitofusin 2 Antibody (A91370) at 1:1,000 dilution. The secondary antibody was Goat Anti-Rabbit IgG H&L Antibody (HRP) at 1:10,000 dilution. Lysates/proteins were present at 25µg per lane. The blocking buffer used was 3% non-fat dry milk in TBST. Detection was with a ECL Basic Kit. Exposure time: 30s.

## Anti-Mitofusin 2 Antibody (A91370)

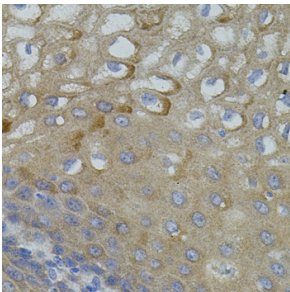
Images continued:



Immunohistochemistry analysis of paraffin-embedded mouse liver using Anti-Mitofusin 2 Antibody (A91370) (40x lens).



Immunohistochemistry analysis of paraffin-embedded human liver damage using Anti-Mitofusin 2 Antibody (A91370) (40x lens).



Immunohistochemistry analysis of paraffin-embedded human esophagus using Anti-Mitofusin 2 Antibody (A91370) (40x lens).