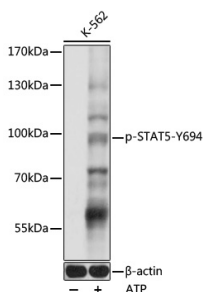


## Anti-STAT5 (phospho Tyr694) Antibody (A91399)

### Specifications:

Name:	Anti-STAT5 (phospho Tyr694) Antibody
Description:	Rabbit polyclonal antibody to STAT5 (phospho Tyr694).
Applications:	WB, IHC
Recommended Dilutions:	WB: 1:500-1:2,000, IHC: 1:100-1:200
Reactivity:	Human, Mouse, Rat
Immunogen:	A synthetic phosphorylated peptide around Y694 of human STAT5 (NP_003143.2/NP_036580.2).
Sequence:	DGYVK
Host:	Rabbit
Clonality:	Polyclonal
Isotype:	IgG
Conjugate:	Unconjugated
Purification:	Affinity purification.
Molecular Weight:	90 kDa
Product Form:	Liquid
Formulation:	Supplied in Phosphate Buffered Saline, pH 7.3, with 50% Glycerol and 0.01% Thiomersal.
Storage:	Shipped at 4°C. Upon delivery aliquot and store at -20°C. Avoid freeze / thaw cycles.
Disclaimer:	This product is for research use only. It is not intended for diagnostic or therapeutic use.

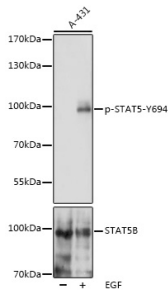
### Images:



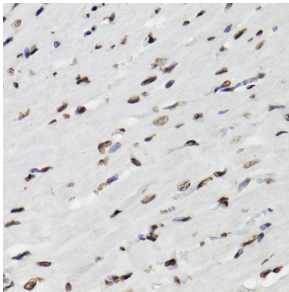
Western blot analysis of extracts of K562 cells, using Anti-STAT5 (phospho Tyr694) Antibody (A91399) at 1:1,000 dilution. K-562 cells were treated by ATP(5 mM) at 30°C for 1 hour. The secondary antibody was Goat Anti-Rabbit IgG H&L Antibody (HRP) at 1:10,000 dilution. Lysates/proteins were present at 25µg per lane. The blocking buffer used was 3% BSA. Detection was with a ECL Basic Kit. Exposure time: 1s.

## Anti-STAT5 (phospho Tyr694) Antibody (A91399)

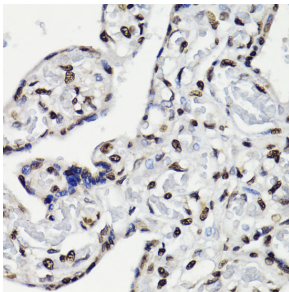
Images continued:



Western blot analysis of extracts of A-431 cells, using Anti-STAT5 (phospho Tyr694) Antibody (A91399) at 1:1,000 dilution or STAT5B antibody (A12356). A-431 cells were treated by EGF (100 ng/ml) at 37°C for 30 minutes after serum-starvation overnight. The secondary antibody was Goat Anti-Rabbit IgG H&L Antibody (HRP) at 1:10,000 dilution. Lysates/proteins were present at 25µg per lane. The blocking buffer used was 3% BSA. Detection was with a ECL Basic Kit. Exposure time: 60s.



Immunohistochemistry analysis of paraffin-embedded rat heart using Anti-STAT5 (phospho Tyr694) Antibody (A91399) at a dilution of 1:200 (40x lens). Perform microwave antigen retrieval with 10 mM Tris/EDTA buffer pH 9.0 before commencing with IHC staining protocol.



Immunohistochemistry analysis of paraffin-embedded human placenta using Anti-STAT5 (phospho Tyr694) Antibody (A91399) at a dilution of 1:200 (40x lens). Perform microwave antigen retrieval with 10 mM Tris/EDTA buffer pH 9.0 before commencing with IHC staining protocol.