

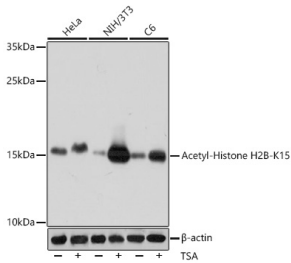
Anti-Histone H2B (acetyl Lys15) Antibody (A91809)

Specifications:

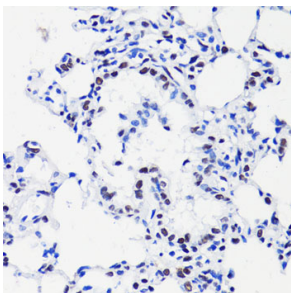
Name:	Anti-Histone H2B (acetyl Lys15) Antibody
Description:	Rabbit polyclonal antibody to Histone H2B (acetyl Lys15).
Applications:	WB, IHC, ICC/IF, IP
Recommended Dilutions:	WB: 1:500-1:2,000, IHC: 1:50-1:200, ICC/IF: 1:50-1:100, IP: 1:50-1:200
Reactivity:	Human, Mouse, Rat
Immunogen:	A synthetic acetylated peptide around K15 of human Histone H2B (NP_003519.1).
Sequence:	AQKKD
Host:	Rabbit
Clonality:	Polyclonal
Isotype:	IgG
Conjugate:	Unconjugated
Purification:	Affinity purification.
Molecular Weight:	15 kDa
Product Form:	Liquid
Formulation:	Supplied in Phosphate Buffered Saline, pH 7.3, with 50% Glycerol and 0.02% Sodium Azide.
Storage:	Shipped at 4°C. Upon delivery aliquot and store at -20°C. Avoid freeze / thaw cycles.
Disclaimer:	This product is for research use only. It is not intended for diagnostic or therapeutic use.

Anti-Histone H2B (acetyl Lys15) Antibody (A91809)

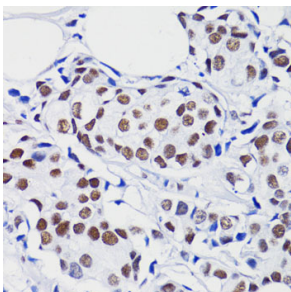
Images:



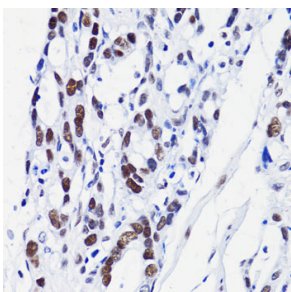
Western blot analysis of extracts of various cell lines, using Anti-Histone H2B (acetyl Lys15) Antibody (A91809) at 1:1,000 dilution. HeLa cells were treated by TSA (1 μ M) at 37°C for 18 hours. NIH/3T3 cells were treated by TSA (1 μ M) at 37°C for 18 hours. C6 cells were treated by TSA (1 μ M) at 37°C for 18 hours. The secondary antibody was Goat Anti-Rabbit IgG H&L Antibody (HRP) at 1:10,000 dilution. Lysates/proteins were present at 25 μ g per lane. The blocking buffer used was 3% BSA. Detection was with a ECL Basic Kit. Exposure time: 10s.



Immunohistochemistry analysis of paraffin-embedded rat lung using Anti-Histone H2B (acetyl Lys15) Antibody (A91809) at a dilution of 1:100 (40x lens). Perform microwave antigen retrieval with 10 mM PBS buffer pH 7.2 before commencing with IHC staining protocol.



Immunohistochemistry analysis of paraffin-embedded human breast cancer tissue using Anti-Histone H2B (acetyl Lys15) Antibody (A91809) at a dilution of 1:100 (40x lens). Perform microwave antigen retrieval with 10 mM PBS buffer pH 7.2 before commencing with IHC staining protocol.



Immunohistochemistry analysis of paraffin-embedded human gastric cancer using Anti-Histone H2B (acetyl Lys15) Antibody (A91809) at a dilution of 1:100 (40x lens). Perform microwave antigen retrieval with 10 mM PBS buffer pH 7.2 before commencing with IHC staining protocol.