

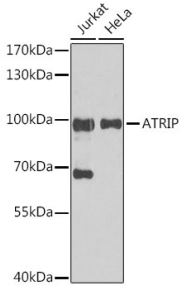
## Anti-ATRIP Antibody (A92057)

### Specifications:

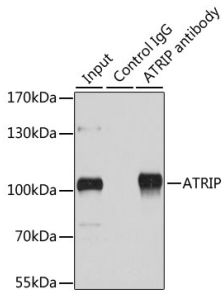
Name:	Anti-ATRIP Antibody
Description:	Rabbit polyclonal antibody to ATRIP.
Applications:	WB, ICC/IF, IP
Recommended Dilutions:	WB: 1:500-1:2,000, ICC/IF: 1:50-1:200, IP: 1:20-1:50
Reactivity:	Human
Immunogen:	Recombinant fusion protein containing a sequence corresponding to amino acids 1-260 of human ATRIP (NP_569055.1).
Sequence:	MAGTSAPGSKRRSEPPAPRPGPPP GTGHPPSKRARGFSAAAAPDPDDPFGAHGDFTAD DLEELDTLASQALSQCPAAARDVSSDHKVRLLDGMSKNPSGKNRETVPKDNFELEV LQAQYKELKEKMKVMEEVLIKNGEIKILRDSLHQTESVLEEQRSSHFLLEQEKTQAL SDKEKEFSKKLQSLQSELQFKDAEMNELR TKLQT SERANKLAAPSVSHVSPRKNPSVV IKPEACSPQFGKTSFPTKESFSANMSLP
Host:	Rabbit
Clonality:	Polyclonal
Isotype:	IgG
Conjugate:	Unconjugated
Purification:	Affinity purification.
Molecular Weight:	100 kDa / 113 kDa
Product Form:	Liquid
Formulation:	Supplied in Phosphate Buffered Saline, pH 7.3, with 50% Glycerol and 0.02% Sodium Azide.
Storage:	Shipped at 4°C. Upon delivery aliquot and store at -20°C. Avoid freeze / thaw cycles.
Disclaimer:	This product is for research use only. It is not intended for diagnostic or therapeutic use.

## Anti-ATRIP Antibody (A92057)

### Images:



Western blot analysis of extracts of various cell lines, using Anti-ATRIP Antibody (A92057) at 1:1,000 dilution. The secondary antibody was Goat Anti-Rabbit IgG H&L Antibody (HRP) at 1:10,000 dilution. Lysates/proteins were present at 25 $\mu$ g per lane. The blocking buffer used was 3% non-fat dry milk in TBST. Detection was with a ECL Basic Kit. Exposure time: 30s.



Immunoprecipitation analysis of 200 $\mu$ g extracts of HeLa cells using 1 $\mu$ g of Anti-ATRIP Antibody (A92057). This Western blot was performed on the immunoprecipitate using Anti-ATRIP Antibody (A92057) at a dilution of 1:1000.