

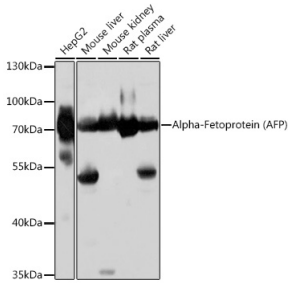
Anti-alpha 1 Fetoprotein Antibody (A92524)

Specifications:

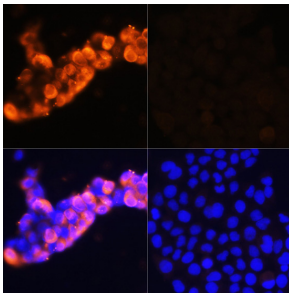
Name:	Anti-alpha 1 Fetoprotein Antibody
Description:	Rabbit polyclonal antibody to alpha 1 Fetoprotein.
Applications:	WB, ICC/IF, IP
Recommended Dilutions:	WB: 1:500-1:2,000, ICC/IF: 1:50-1:200, IP: 1:50-1:100
Reactivity:	Human, Mouse, Rat
Immunogen:	Recombinant fusion protein containing a sequence corresponding to amino acids 395-609 of Alpha-Fetoprotein (AFP) (NP_001125.1).
Sequence:	DKGEEELQKYIQESQALAKRSCGLFQKLGEYYLQNAFLVAYTKKAPQLTSSSELMAITR KMAATAATCCQLSEDKLLACGEGAADIIGHLCIRHEMTPVNPVGVCCTSSYANRRP CFSSLVDETYVPPAFSDDKFIFHKDLCQAQGVALQTMKQEFLINLVKQKPQITEEQL EAVIADFSGLLEKCCQGQEQEVCFEEGQKLIKTRAALGV
Host:	Rabbit
Clonality:	Polyclonal
Isotype:	IgG
Conjugate:	Unconjugated
Purification:	Affinity purification.
Molecular Weight:	75 kDa
Product Form:	Liquid
Formulation:	Supplied in Phosphate Buffered Saline, pH 7.3, with 50% Glycerol and 0.01% Thiomersal.
Storage:	Shipped at 4°C. Upon delivery aliquot and store at -20°C. Avoid freeze / thaw cycles.
Disclaimer:	This product is for research use only. It is not intended for diagnostic or therapeutic use.

Anti-alpha 1 Fetoprotein Antibody (A92524)

Images:



Western blot analysis of extracts of various cell lines, using Anti-alpha 1 Fetoprotein Antibody (A92524) at 1:1,000 dilution. The secondary antibody was Goat Anti-Rabbit IgG H&L Antibody (HRP) at 1:10,000 dilution. Lysates/proteins were present at 25µg per lane. The blocking buffer used was 3% non-fat dry milk in TBST. Detection was with a ECL Basic Kit. Exposure time: 10s.



Immunofluorescence analysis of HepG2 cells (upper left) and LO2 cells (negative sample control, upper right) using Anti-alpha 1 Fetoprotein Antibody (A92524), at a dilution of 1:100, (Red). DAPI was used to stain the cell nuclei (blue).