

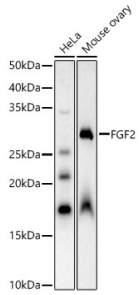
## Anti-FGF2 Antibody (A92780)

### Specifications:

|                        |   |
|------------------------|---|
| Name:                  | Anti-FGF2 Antibody  |
| Description:           | Rabbit polyclonal antibody to FGF2.   |
| Applications:          | WB  |
| Recommended Dilutions: | WB: 1:1,000-1:5,000   |
| Reactivity:            | Human, Mouse, Rat   |
| Immunogen:             | Recombinant fusion protein containing a sequence corresponding to amino acids 143-288 of FGF2 (NP_001997.5).  |
| Sequence:              | PALPEDGGSGAFPPGHFKDPKRLYCKNGGFFLRIHPDGRVDGVREKSDPHIKLQLQAE<br>ERGVVSIKGVCANRYLAMKEDGRLLASKCVTDECCFFFERLESNNYNTYRSRKYTSWYV<br>ALKRTGQYKLGSKTGPGQKAILFLPMSAKS |
| Host:                  | Rabbit  |
| Clonality:             | Polyclonal  |
| Isotype:               | IgG   |
| Conjugate:             | Unconjugated  |
| Purification:          | Affinity purification.  |
| Molecular Weight:      | 18 kDa / 22 kDa / 24 kDa  |
| Product Form:          | Liquid  |
| Formulation:           | Supplied in Phosphate Buffered Saline, pH 7.3, with 50% Glycerol and 0.01% Thiomersal.  |
| Storage:               | Shipped at 4°C. Upon delivery aliquot and store at -20°C. Avoid freeze / thaw cycles.   |
| Disclaimer:            | This product is for research use only. It is not intended for diagnostic or therapeutic use.  |

## Anti-FGF2 Antibody (A92780)

### Images:



Western blot analysis of extracts of various cell lines, using Anti-FGF2 Antibody (A92780) at 1:2,000 dilution. The secondary antibody was Goat Anti-Rabbit IgG H&L Antibody (HRP) at 1:10,000 dilution. Lysates/proteins were present at 25 $\mu$ g per lane. The blocking buffer used was 3% non-fat dry milk in TBST. Detection was with a ECL Basic Kit. Exposure time: 30s.