

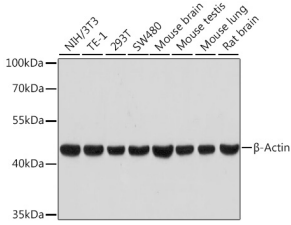
## Anti-beta Actin Antibody [ARC5115-01] (A92938)

### Specifications:

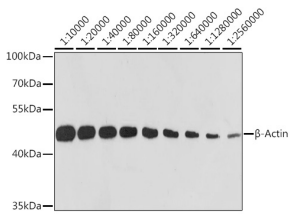
Name:	Anti-beta Actin Antibody [ARC5115-01]
Description:	Rabbit monoclonal [ARC5115-01] antibody to beta Actin.
Applications:	WB
Recommended Dilutions:	WB: 1:50,000-1:200,000
Reactivity:	Human, Mouse, Rat, Chicken, Zebrafish, Porcine
Immunogen:	Recombinant protein of human $\beta$ -actin.
Sequence:	MDDDIAALVVDNGSGMCKAGFAGDDAPRAVFPSIVGRPRHQGVMMVGMGQKDSYVGDEA QSKRGILTLKYPIEHGIVTNWDDMEKIWHHTFYNELRVAPEEHPVLLTEAPLNPKANR EKMTQIMFETFNTPAMYVAIQAVLSLYASGRRTGIVMDSGDGVTHTVPIYEGYALPHA ILRLDLAGRDLTDYLMKILTERGYSFTTTAEREIVRDIKEKLCYVALDFEQEMATAAS SSSLEKSYELPDGQVITIGNERFRCPEALFQPSFLGMESCGIHETTFNSIMKCDVDIR KDLYANTVLSGGTTMYPGIADRMQKEITALAPSTMKIKIIPPERKYSVWIGGSILAS LSTFQQMWISKQEYDESGPSIVHRKCF
Host:	Rabbit
Clonality:	Monoclonal
Clone ID:	ARC5115-01
Isotype:	IgG
Conjugate:	Unconjugated
Purification:	Affinity purification.
Molecular Weight:	42 kDa
Product Form:	Liquid
Formulation:	Supplied in Phosphate Buffered Saline, pH 7.3, with 50% Glycerol, 0.05% BSA, and 0.05% Proclin 300.
Storage:	Shipped at 4°C. Upon delivery aliquot and store at -20°C. Avoid freeze / thaw cycles.
Disclaimer:	This product is for research use only. It is not intended for diagnostic or therapeutic use.

## Anti-beta Actin Antibody [ARC5115-01] (A92938)

### Images:



Western blot analysis of extracts of various cell lines, using Anti-beta Actin Antibody [ARC5115-01] (A92938) at 1:10,000 dilution. Lysates/proteins were present at 25µg per lane. The blocking buffer used was 3% non-fat dry milk in TBST. Detection was with a ECL Basic Kit. Exposure time: 30s.



Western blot analysis of extracts of HeLa cells, using Anti-beta Actin Antibody [ARC5115-01] (A92938) at 1:10,000 dilution. Lysates/proteins were present at 25µg per lane. The blocking buffer used was 3% non-fat dry milk in TBST. Detection was with a ECL Basic Kit. Exposure time: 10s.