

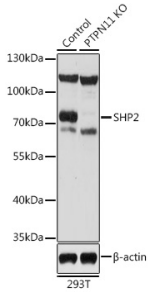
Anti-SHP2 Antibody (A93012)

Specifications:

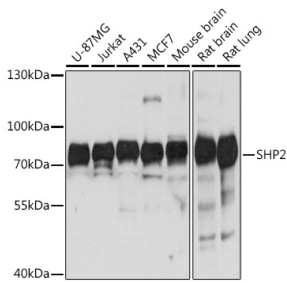
Name:	Anti-SHP2 Antibody
Description:	Rabbit polyclonal antibody to SHP2.
Applications:	WB, ICC/IF, IP
Recommended Dilutions:	WB: 1:500-1:2,000, ICC/IF: 1:50-1:200, IP: 1:1,000-1:5,000
Reactivity:	Human, Mouse, Rat
Immunogen:	Recombinant fusion protein containing a sequence corresponding to amino acids 1-460 of human SHP2 (NP_002825.3).
Sequence:	MTSRRWFHPNITGVEAENLLLTRGVDGSFLARPSKSNPGDFTLSVRRNGAVTHIKIQN TGDYYDLYGGKEKFATLAELVQYYMEHHGQLKEKNGDVIELKYPLNCADPTSERWFHGH LSGKEAEKLLTEKGKHGSFLVRESQSHPGDFVLSVRTGDDKGESNDGKSKVTHVMIRC QELKYDVGGGERFDSLTDLVEHYKKNPMVETLGTVLQLKQPLNTRINAAEIESRVRE LSKLAETTDKVKQGFWEFETLQQQECKLLYSRKEGQRQENKNKNRYKNILPFDHTRV VLHDGDPNEPVSDYINANIIMPEFETKCNNSKPKKSYIATQGCLQNTVNDFFWRMVFQE NSRVIVMTTKEVERGKSKCVKYWPDEYALKEYGVMRVRNVKESAAHDYTLRELKLSKV GQGNTERTVWQYHFRTWPDHGVPSDPGGVLDLFLEEVHHKQESIMDAGPVVVHCS
Host:	Rabbit
Clonality:	Polyclonal
Isotype:	IgG
Conjugate:	Unconjugated
Purification:	Affinity purification.
Molecular Weight:	75 kDa
Product Form:	Liquid
Formulation:	Supplied in Phosphate Buffered Saline, pH 7.3, with 50% Glycerol and 0.01% Thiomersal.
Storage:	Shipped at 4°C. Upon delivery aliquot and store at -20°C. Avoid freeze / thaw cycles.
Disclaimer:	This product is for research use only. It is not intended for diagnostic or therapeutic use.

Anti-SHP2 Antibody (A93012)

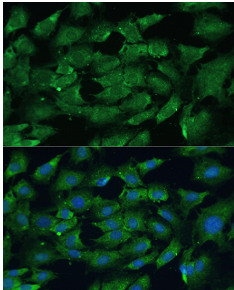
Images:



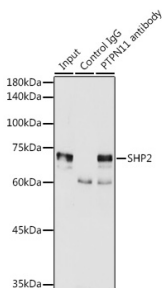
Western blot analysis of extracts from normal (control) and SHP2 knockout (KO) 293T cells, using Anti-SHP2 Antibody (A93012) at 1:1,000 dilution. The secondary antibody was Goat Anti-Rabbit IgG H&L Antibody (HRP) at 1:10,000 dilution. Lysates/proteins were present at 25µg per lane. The blocking buffer used was 3% non-fat dry milk in TBST. Detection was with a ECL Basic Kit. Exposure time: 30s.



Western blot analysis of extracts of various cell lines, using Anti-SHP2 Antibody (A93012) at 1:1,000 dilution. The secondary antibody was Goat Anti-Rabbit IgG H&L Antibody (HRP) at 1:10,000 dilution. Lysates/proteins were present at 25µg per lane. The blocking buffer used was 3% non-fat dry milk in TBST. Detection was with a ECL Basic Kit. Exposure time: 3s.



Immunofluorescence analysis of C6 cells using Anti-SHP2 Antibody (A93012) at a dilution of 1:100. DAPI was used to stain the cell nuclei (blue).



Immunoprecipitation analysis of 300µg extracts of MCF7 cells using 3µg of Anti-SHP2 Antibody (A93012). This Western blot was performed on the immunoprecipitate using Anti-SHP2 Antibody (A93012) at a dilution of 1:2000.