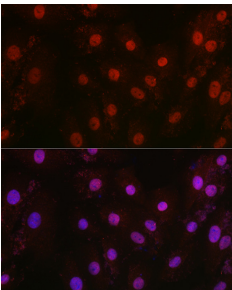


Anti-HIF1 beta Antibody (A93165)

Specifications:

Name:	Anti-HIF1 beta Antibody
Description:	Rabbit polyclonal antibody to HIF1 beta.
Applications:	ICC/IF
Recommended Dilutions:	ICC/IF: 1:50-1:200
Reactivity:	Human, Mouse, Rat
Immunogen:	Recombinant fusion protein containing a sequence corresponding to amino acids 465-570 of human HIF1 β /ARNT (NP_001659.1).
Sequence:	KNSSQEPRPTLSNTIQRPQLGPTANLPLEMGSGQLAPRQQQQQTELDMVPGRDGLASY NHSQVVQPVTGPEHSKPLEKSDGLFAQDRDPRFSEIYHNINADQSK
Host:	Rabbit
Clonality:	Polyclonal
Isotype:	IgG
Conjugate:	Unconjugated
Purification:	Affinity purification.
Product Form:	Liquid
Formulation:	Supplied in Phosphate Buffered Saline, pH 7.3, with 50% Glycerol and 0.01% Thiomersal.
Storage:	Shipped at 4°C. Upon delivery aliquot and store at -20°C. Avoid freeze / thaw cycles.
Disclaimer:	This product is for research use only. It is not intended for diagnostic or therapeutic use.

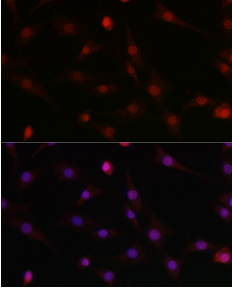
Images:



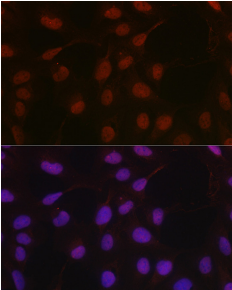
Immunofluorescence analysis of H9C2 cells using Anti-HIF1 beta Antibody (A93165) at a dilution of 1:100 (40x lens). DAPI was used to stain the cell nuclei (blue).

Anti-HIF1 beta Antibody (A93165)

Images continued:



Immunofluorescence analysis of NIH-3T3 cells using Anti-HIF1 beta Antibody (A93165) at a dilution of 1:100 (40x lens). DAPI was used to stain the cell nuclei (blue).



Immunofluorescence analysis of U-S OS cells using Anti-HIF1 beta Antibody (A93165) at a dilution of 1:100 (40x lens). DAPI was used to stain the cell nuclei (blue).