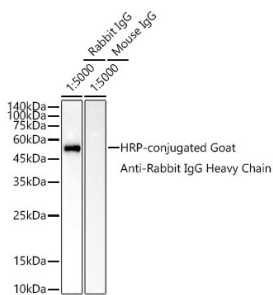


## Goat Anti-Rabbit IgG Heavy Chain Antibody (HRP) (A93384)

### Specifications:

Name:	Goat Anti-Rabbit IgG Heavy Chain Antibody (HRP)
Description:	Goat Anti-Rabbit IgG Heavy Chain Antibody (HRP).
Host Species:	Goat
Target Species:	Rabbit
Applications:	WB
Recommended Dilutions:	WB: 1:1,000-1:10,000
Immunogen:	Rabbit IgG.
Clonality:	Polyclonal
Isotype:	IgG
Conjugate:	HRP
Product Form:	Liquid
Purification:	Affinity purification.
Formulation:	Supplied in Phosphate Buffered Saline, pH 7.3, with 50% Glycerol.
Storage:	Shipped at 4°C. Upon delivery aliquot and store at -20°C. Avoid freeze / thaw cycles.
Disclaimer:	This product is for research use only. It is not intended for diagnostic or therapeutic use.

### Images:



Western blot analysis of extracts of Rabbit and Mouse IgG, using Goat Anti-Rabbit IgG Heavy Chain Antibody (HRP) (A93384) at 1:5,000 dilution. Lysates/proteins: 100ng per lane. Blocking buffer: 3% non-fat dry milk in TBST. Detection was with an ECL Basic Kit. Exposure time: 180s.