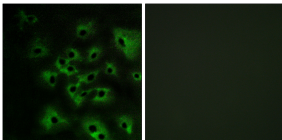


Anti-HER4 (phospho Tyr1284) Antibody (A93495)

Specifications:

Name:	Anti-HER4 (phospho Tyr1284) Antibody
Description:	Rabbit polyclonal antibody to HER4 (phospho Tyr1284).
Specificity:	This antibody detects endogenous levels of HER4 only when phosphorylated at Tyr1284.
Applications:	WB, IHC, IF, ELISA
Recommended Dilutions:	IHC: 1:50-1:100, ELISA: 1:10000
Reactivity:	Human, Mouse, Rat
Immunogen:	Synthetic peptide derived from human HER4 around the phosphorylation site of Tyr1284 (amino acids 1250-1299).
Host:	Rabbit
Clonality:	Polyclonal
Isotype:	IgG
Conjugate:	Unconjugated
Purification:	Purified from rabbit serum by antigen affinity chromatography using the immunizing phospho peptide.
Molecular Weight:	146kDa
Product Form:	Liquid
Formulation:	Supplied in Phosphate Buffered Saline (without Mg ²⁺ and Ca ²⁺), pH 7.4, with 150mM NaCl, 0.02% Sodium Azide, and 50% Glycerol.
Storage:	Shipped at 4°C. Upon delivery aliquot and store at -20°C. Avoid freeze / thaw cycles.
Disclaimer:	This product is for research use only. It is not intended for diagnostic or therapeutic use.

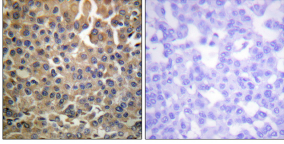
Images:



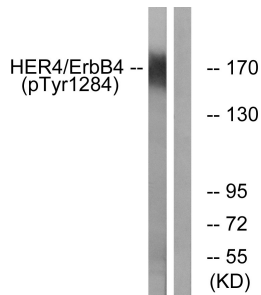
Immunofluorescence analysis of HeLa cells, treated with EGF 200nM 5', using Anti-HER4 (phospho Tyr1284) Antibody. The right hand panel represents a negative control, where the antibody was pre-incubated with the immunising peptide.

Anti-HER4 (phospho Tyr1284) Antibody (A93495)

Images continued:



Immunohistochemical analysis of paraffin-embedded human breast carcinoma using Anti-HER4 (phospho Tyr1284) Antibody. The right hand panel represents a negative control, where the antibody was pre-incubated with the immunising peptide.



Western blot analysis of lysates from HUVEC cells treated with EGF 200ng/ml 30' using Anti-HER4 (phospho Tyr1284) Antibody. The right hand lane represents a negative control, where the antibody is blocked by the immunising peptide.