

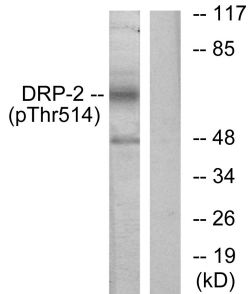
Anti-DRP-2 (phospho Thr514) Antibody (A93500)

Specifications:

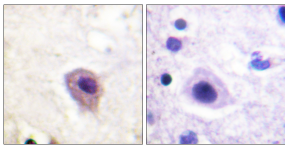
Name:	Anti-DRP-2 (phospho Thr514) Antibody
Description:	Rabbit polyclonal antibody to DRP-2 (phospho Thr514).
Specificity:	This antibody detects endogenous levels of DRP-2 only when phosphorylated at Thr514.
Applications:	WB, IHC, IF, ELISA
Recommended Dilutions:	IHC: 1:50-1:100, ELISA: 1:10000
Reactivity:	Human, Mouse, Rat
Immunogen:	Synthetic peptide derived from human DRP-2 around the phosphorylation site of Thr514 (amino acids 480-529).
Host:	Rabbit
Clonality:	Polyclonal
Isotype:	IgG
Conjugate:	Unconjugated
Purification:	Purified from rabbit serum by antigen affinity chromatography using the immunizing phospho peptide.
Molecular Weight:	62kDa
Product Form:	Liquid
Formulation:	Supplied in Phosphate Buffered Saline (without Mg ²⁺ and Ca ²⁺), pH 7.4, with 150mM NaCl, 0.02% Sodium Azide, and 50% Glycerol.
Storage:	Shipped at 4°C. Upon delivery aliquot and store at -20°C. Avoid freeze / thaw cycles.
Disclaimer:	This product is for research use only. It is not intended for diagnostic or therapeutic use.

Anti-DRP-2 (phospho Thr514) Antibody (A93500)

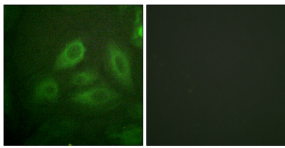
Images:



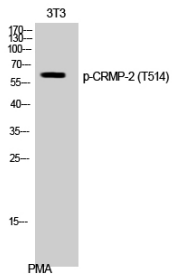
Western blot analysis of lysates from NIH/3T3 cells treated with PMA 125ng/ml 30' using Anti-DRP-2 (phospho Thr514) Antibody. The right hand lane represents a negative control, where the antibody is blocked by the immunising peptide.



Immunohistochemical analysis of paraffin-embedded human brain using Anti-DRP-2 (phospho Thr514) Antibody. The right hand panel represents a negative control, where the antibody was pre-incubated with the immunising peptide.



Immunofluorescence analysis of HeLa cells using Anti-DRP-2 (phospho Thr514) Antibody. The right hand panel represents a negative control, where the antibody was pre-incubated with the immunising peptide.



Western blot analysis of 3T3 cells using Anti-DRP-2 (phospho Thr514) Antibody.