

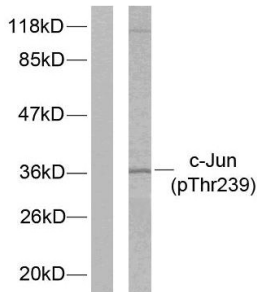
## Anti-c-Jun (phospho Thr239) Antibody (A93502)

### Specifications:

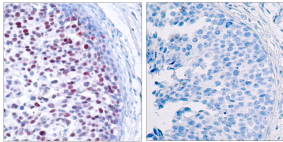
Name:	Anti-c-Jun (phospho Thr239) Antibody
Description:	Rabbit polyclonal antibody to c-Jun (phospho Thr239).
Specificity:	This antibody detects endogenous levels of c-Jun only when phosphorylated at Thr239.
Applications:	WB, IHC, IP, ELISA
Recommended Dilutions:	WB: 1:500-1:1000, ELISA: 1:20000
Reactivity:	Human, Mouse, Rat
Immunogen:	Synthetic peptide derived from human c-Jun around the phosphorylation site of Thr239 (amino acids 206-255).
Host:	Rabbit
Clonality:	Polyclonal
Isotype:	IgG
Conjugate:	Unconjugated
Purification:	Purified from rabbit serum by antigen affinity chromatography using the immunizing phospho peptide.
Molecular Weight:	35kDa
Product Form:	Liquid
Formulation:	Supplied in Phosphate Buffered Saline (without Mg <sup>2+</sup> and Ca <sup>2+</sup> ), pH 7.4, with 150mM NaCl, 0.02% Sodium Azide, and 50% Glycerol.
Storage:	Shipped at 4°C. Upon delivery aliquot and store at -20°C. Avoid freeze / thaw cycles.
Disclaimer:	This product is for research use only. It is not intended for diagnostic or therapeutic use.

## Anti-c-Jun (phospho Thr239) Antibody (A93502)

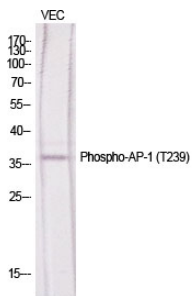
### Images:



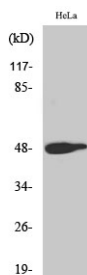
Western blot analysis of lysates from HeLa cells treated with UV using Anti-c-Jun (phospho Thr239) Antibody. The left hand lane represents a negative control, where the antibody is blocked by the immunising peptide.



Immunohistochemical analysis of paraffin-embedded human breast carcinoma using Anti-c-Jun (phospho Thr239) Antibody. The right hand panel represents a negative control, where the antibody was pre-incubated with the immunising peptide.



Western blot analysis of various cells using Anti-c-Jun (phospho Thr239) Antibody.



Western blot analysis of HeLa cells using Anti-c-Jun (phospho Thr239) Antibody.