

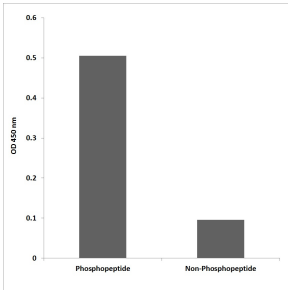
## Anti-Vimentin (phospho Ser38) Antibody (A93525)

### Specifications:

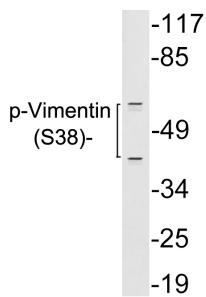
Name:	Anti-Vimentin (phospho Ser38) Antibody
Description:	Rabbit polyclonal antibody to Vimentin (phospho Ser38).
Specificity:	This antibody detects endogenous levels of Vimentin only when phosphorylated at Ser38.
Applications:	WB, ELISA
Recommended Dilutions:	WB: 1:500-1:1000, IHC: 1:50-1:100, ELISA: 1:20000
Reactivity:	Human, Mouse, Rat
Immunogen:	Synthetic phospho-peptide derived from human Vimentin around the phosphorylation site of Ser38.
Host:	Rabbit
Clonality:	Polyclonal
Isotype:	IgG
Conjugate:	Unconjugated
Purification:	Purified from rabbit serum by antigen affinity chromatography using the immunizing phospho peptide.
Molecular Weight:	53kDa
Product Form:	Liquid
Formulation:	Supplied in Phosphate Buffered Saline (without Mg <sup>2+</sup> and Ca <sup>2+</sup> ), pH 7.4, with 150mM NaCl, 0.02% Sodium Azide, and 50% Glycerol.
Storage:	Shipped at 4°C. Upon delivery aliquot and store at -20°C. Avoid freeze / thaw cycles.
Disclaimer:	This product is for research use only. It is not intended for diagnostic or therapeutic use.

## Anti-Vimentin (phospho Ser38) Antibody (A93525)

### Images:



ELISA for immunogen phosphopeptide (left) and non-phosphopeptide (right) using Anti-Vimentin (phospho Ser38) Antibody.



Western blot analysis of lysates from 293 cells treated with paclitaxel using Anti-Vimentin (phospho Ser38) Antibody.