

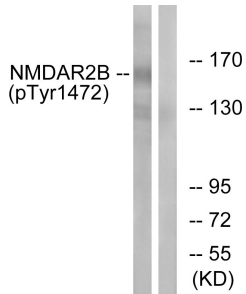
## Anti-NMDAR2B (phospho Tyr1474) Antibody (A93621)

### Specifications:

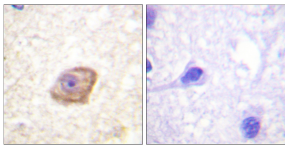
Name:	Anti-NMDAR2B (phospho Tyr1474) Antibody
Description:	Rabbit polyclonal antibody to NMDAR2B (phospho Tyr1474).
Specificity:	This antibody detects endogenous levels of NMDAR2B only when phosphorylated at Tyr1474.
Applications:	WB, IHC, ELISA
Recommended Dilutions:	WB: 1:500-1:1000, IHC: 1:50-1:100, ELISA: 1:40000
Reactivity:	Human, Mouse, Rat
Immunogen:	Synthetic peptide derived from human NMDAR2B around the phosphorylation site of Tyr1474 (amino acids 1435-1484).
Host:	Rabbit
Clonality:	Polyclonal
Isotype:	IgG
Conjugate:	Unconjugated
Purification:	Purified from rabbit serum by antigen affinity chromatography using the immunizing peptide.
Molecular Weight:	165kDa
Product Form:	Liquid
Formulation:	Supplied in Phosphate Buffered Saline (without Mg <sup>2+</sup> and Ca <sup>2+</sup> ), pH 7.4, with 150mM NaCl, 0.02% Sodium Azide, and 50% Glycerol.
Storage:	Shipped at 4°C. Upon delivery aliquot and store at -20°C. Avoid freeze / thaw cycles.
Disclaimer:	This product is for research use only. It is not intended for diagnostic or therapeutic use.

## Anti-NMDAR2B (phospho Tyr1474) Antibody (A93621)

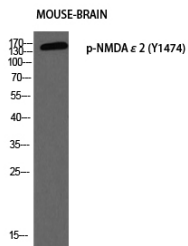
### Images:



Western blot analysis of lysates from Jurkat cells treated with UV 15' using Anti-NMDAR2B (phospho Tyr1474) Antibody. The right hand lane represents a negative control, where the antibody is blocked by the immunising peptide.



Immunohistochemical analysis of paraffin-embedded human brain using Anti-NMDAR2B (phospho Tyr1474) Antibody. The right hand panel represents a negative control, where the antibody was pre-incubated with the immunising peptide.



Western blot analysis of mouse BRAIN using Anti-NMDAR2B (phospho Tyr1474) Antibody.