

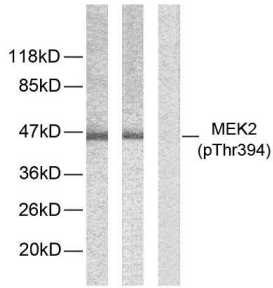
## Anti-MEK2 (phospho Thr394) Antibody (A93635)

### Specifications:

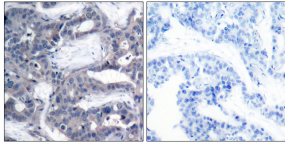
|                        |  |
|------------------------|--|
| Name:                  | Anti-MEK2 (phospho Thr394) Antibody  |
| Description:           | Rabbit polyclonal antibody to MEK2 (phospho Thr394).   |
| Specificity:           | This antibody detects endogenous levels of MEK2 only when phosphorylated at Thr394.  |
| Applications:          | WB, IHC, IP, ELISA   |
| Recommended Dilutions: | WB: 1:500-1:1000, IHC: 1:50-1:100, ELISA: 1:10000  |
| Reactivity:            | Human, Mouse, Rat  |
| Immunogen:             | Synthetic peptide derived from human MEK2 around the phosphorylation site of Thr394 (amino acids 261-310).   |
| Host:                  | Rabbit   |
| Clonality:             | Polyclonal   |
| Isotype:               | IgG  |
| Conjugate:             | Unconjugated   |
| Purification:          | Purified from rabbit serum by antigen affinity chromatography using the immunizing phospho peptide.  |
| Molecular Weight:      | 44kDa  |
| Product Form:          | Liquid   |
| Formulation:           | Supplied in Phosphate Buffered Saline (without Mg <sup>2+</sup> and Ca <sup>2+</sup> ), pH 7.4, with 150mM NaCl, 0.02% Sodium Azide, and 50% Glycerol. |
| Storage:               | Shipped at 4°C. Upon delivery aliquot and store at -20°C. Avoid freeze / thaw cycles.  |
| Disclaimer:            | This product is for research use only. It is not intended for diagnostic or therapeutic use.   |

## Anti-MEK2 (phospho Thr394) Antibody (A93635)

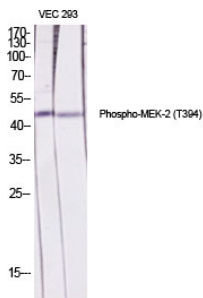
### Images:



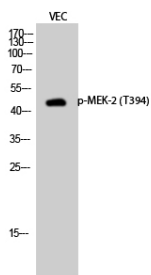
Western blot analysis of lysates from ovary cancer using Anti-MEK2 (phospho Thr394) Antibody. The right hand lane represents a negative control, where the antibody is blocked by the immunising peptide.



Immunohistochemical analysis of paraffin-embedded human breast carcinoma using Anti-MEK2 (phospho Thr394) Antibody. The right hand panel represents a negative control, where the antibody was pre-incubated with the immunising peptide.



Western blot analysis of various cells using Anti-MEK2 (phospho Thr394) Antibody.



Western blot analysis of VEC cells using Anti-MEK2 (phospho Thr394) Antibody.