

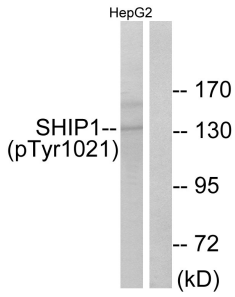
Anti-SHIP1 (phospho Tyr1021) Antibody (A93659)

Specifications:

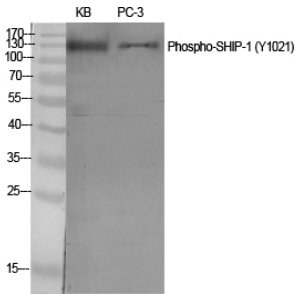
Name:	Anti-SHIP1 (phospho Tyr1021) Antibody
Description:	Rabbit polyclonal antibody to SHIP1 (phospho Tyr1021).
Specificity:	This antibody detects endogenous levels of SHIP1 only when phosphorylated at Tyr1021.
Applications:	WB, ELISA
Recommended Dilutions:	WB: 1:500-1:1000, IHC: 1:50-1:100, ELISA: 1:10000
Reactivity:	Human, Mouse, Rat
Immunogen:	Synthetic peptide derived from human SHIP1 around the phosphorylation site of Tyr1021 (amino acids 987-1036).
Host:	Rabbit
Clonality:	Polyclonal
Isotype:	IgG
Conjugate:	Unconjugated
Purification:	Purified from rabbit serum by antigen affinity chromatography using the immunizing phospho peptide.
Molecular Weight:	133kDa
Product Form:	Liquid
Formulation:	Supplied in Phosphate Buffered Saline (without Mg ²⁺ and Ca ²⁺), pH 7.4, with 150mM NaCl, 0.02% Sodium Azide, and 50% Glycerol.
Storage:	Shipped at 4°C. Upon delivery aliquot and store at -20°C. Avoid freeze / thaw cycles.
Disclaimer:	This product is for research use only. It is not intended for diagnostic or therapeutic use.

Anti-SHIP1 (phospho Tyr1021) Antibody (A93659)

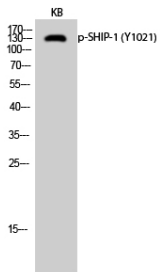
Images:



Western blot analysis of lysates from HepG2 cells treated with TNF 200NG/ML 30' using Anti-SHIP1 (phospho Tyr1021) Antibody. The right hand lane represents a negative control, where the antibody is blocked by the immunising peptide.



Western blot analysis of various cells using Anti-SHIP1 (phospho Tyr1021) Antibody.



Western blot analysis of KB cells using Anti-SHIP1 (phospho Tyr1021) Antibody.