

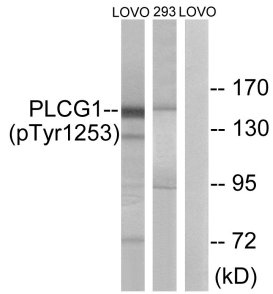
## Anti-PLCG1 (phospho Tyr1253) Antibody (A93662)

### Specifications:

Name:	Anti-PLCG1 (phospho Tyr1253) Antibody
Description:	Rabbit polyclonal antibody to PLCG1 (phospho Tyr1253).
Specificity:	This antibody detects endogenous levels of PLCG1 only when phosphorylated at Tyr1253.
Applications:	WB, ELISA
Recommended Dilutions:	WB: 1:500-1:1000, IHC: 1:50-1:100, IF: 1:100-1:500, ELISA: 1:1000
Reactivity:	Human, Mouse, Rat
Immunogen:	Synthetic peptide derived from human PLCG1 around the phosphorylation site of Tyr1253 (amino acids 1221-1270).
Host:	Rabbit
Clonality:	Polyclonal
Isotype:	IgG
Conjugate:	Unconjugated
Purification:	Purified from rabbit serum by antigen affinity chromatography using the immunizing phospho peptide.
Molecular Weight:	148kDa
Product Form:	Liquid
Formulation:	Supplied in Phosphate Buffered Saline (without Mg <sup>2+</sup> and Ca <sup>2+</sup> ), pH 7.4, with 150mM NaCl, 0.02% Sodium Azide, and 50% Glycerol.
Storage:	Shipped at 4°C. Upon delivery aliquot and store at -20°C. Avoid freeze / thaw cycles.
Disclaimer:	This product is for research use only. It is not intended for diagnostic or therapeutic use.

## Anti-PLCG1 (phospho Tyr1253) Antibody (A93662)

Images:



Western blot analysis of lysates from LOVO cells treated with and 293 cells treated with heat shock using Anti-PLCG1 (phospho Tyr1253) Antibody. The right hand lane represents a negative control, where the antibody is blocked by the immunising peptide.