

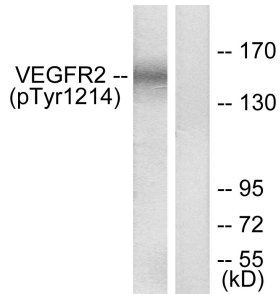
## Anti-VEGFR2 (phospho Tyr1214) Antibody (A93762)

### Specifications:

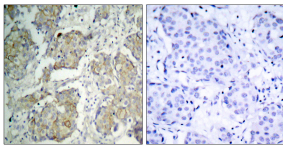
|                        |  |
|------------------------|--|
| Name:                  | Anti-VEGFR2 (phospho Tyr1214) Antibody   |
| Description:           | Rabbit polyclonal antibody to VEGFR2 (phospho Tyr1214).  |
| Specificity:           | This antibody detects endogenous levels of VEGFR2 only when phosphorylated at Tyr1214.   |
| Applications:          | WB, IHC, ELISA   |
| Recommended Dilutions: | WB: 1:500-1:1000, ELISA: 1:10000   |
| Reactivity:            | Human, Mouse, Rat  |
| Immunogen:             | Synthetic peptide derived from human VEGFR2 around the phosphorylation site of Tyr1214 (amino acids 1180-1229).  |
| Host:                  | Rabbit   |
| Clonality:             | Polyclonal   |
| Isotype:               | IgG  |
| Conjugate:             | Unconjugated   |
| Purification:          | Purified from rabbit serum by antigen affinity chromatography using the immunizing phospho peptide.  |
| Molecular Weight:      | 151kDa   |
| Product Form:          | Liquid   |
| Formulation:           | Supplied in Phosphate Buffered Saline (without Mg <sup>2+</sup> and Ca <sup>2+</sup> ), pH 7.4, with 150mM NaCl, 0.02% Sodium Azide, and 50% Glycerol. |
| Storage:               | Shipped at 4°C. Upon delivery aliquot and store at -20°C. Avoid freeze / thaw cycles.  |
| Disclaimer:            | This product is for research use only. It is not intended for diagnostic or therapeutic use.   |

## Anti-VEGFR2 (phospho Tyr1214) Antibody (A93762)

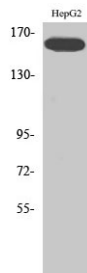
### Images:



Western blot analysis of lysates from HepG2 cells treated with Na<sub>3</sub>VO<sub>4</sub> 0.3nM 40' using Anti-VEGFR2 (phospho Tyr1214) Antibody. The right hand lane represents a negative control, where the antibody is blocked by the immunising peptide.



Immunohistochemical analysis of paraffin-embedded human breast carcinoma using Anti-VEGFR2 (phospho Tyr1214) Antibody. The right hand panel represents a negative control, where the antibody was pre-incubated with the immunising peptide.



Western blot analysis of various cells using Anti-VEGFR2 (phospho Tyr1214) Antibody.