

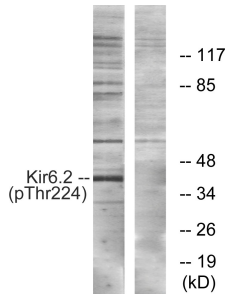
Anti-Kir6.2 (phospho Thr224) Antibody (A93804)

Specifications:

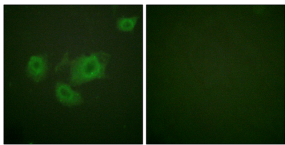
Name:	Anti-Kir6.2 (phospho Thr224) Antibody
Description:	Rabbit polyclonal antibody to Kir6.2 (phospho Thr224).
Specificity:	This antibody detects endogenous levels of Kir6.2 only when phosphorylated at Thr224.
Applications:	WB, IF, ELISA
Recommended Dilutions:	WB: 1:500-1:1000, ELISA: 1:10000
Reactivity:	Human, Mouse
Immunogen:	Synthetic peptide derived from human Kir6.2 around the phosphorylation site of Thr224 (amino acids 190-239).
Host:	Rabbit
Clonality:	Polyclonal
Isotype:	IgG
Conjugate:	Unconjugated
Purification:	Purified from rabbit serum by antigen affinity chromatography using the immunizing phospho peptide.
Molecular Weight:	43kDa
Product Form:	Liquid
Formulation:	Supplied in Phosphate Buffered Saline (without Mg ²⁺ and Ca ²⁺), pH 7.4, with 150mM NaCl, 0.02% Sodium Azide, and 50% Glycerol.
Storage:	Shipped at 4°C. Upon delivery aliquot and store at -20°C. Avoid freeze / thaw cycles.
Disclaimer:	This product is for research use only. It is not intended for diagnostic or therapeutic use.

Anti-Kir6.2 (phospho Thr224) Antibody (A93804)

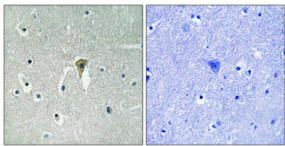
Images:



Western blot analysis of lysates from HeLa cells using Anti-Kir6.2 (phospho Thr224) Antibody. The right hand lane represents a negative control, where the antibody is blocked by the immunising peptide.



Immunofluorescence analysis of HUVEC cells using Anti-Kir6.2 (phospho Thr224) Antibody. The right hand panel represents a negative control, where the antibody was pre-incubated with the immunising peptide.



Immunohistochemical analysis of paraffin-embedded human brain using Anti-Kir6.2 (phospho Thr224) Antibody 1:100 (4°C overnight). The right hand panel represents a negative control, where the antibody was pre-incubated with the immunising peptide.