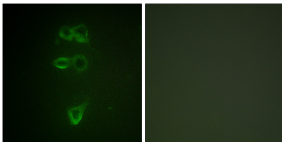


Anti-TIE2 (phospho Tyr1108) Antibody (A93812)

Specifications:

Name:	Anti-TIE2 (phospho Tyr1108) Antibody
Description:	Rabbit polyclonal antibody to TIE2 (phospho Tyr1108).
Specificity:	This antibody detects endogenous levels of TIE2 only when phosphorylated at Tyr1108.
Applications:	WB, IF, ELISA
Recommended Dilutions:	WB: 1:500-1:1000, ELISA: 1:10000
Reactivity:	Human, Mouse
Immunogen:	Synthetic peptide derived from human TIE2 around the phosphorylation site of Tyr1108 (amino acids 1074-1123).
Host:	Rabbit
Clonality:	Polyclonal
Isotype:	IgG
Conjugate:	Unconjugated
Purification:	Purified from rabbit serum by antigen affinity chromatography using the immunizing phospho peptide.
Molecular Weight:	125kDa
Product Form:	Liquid
Formulation:	Supplied in Phosphate Buffered Saline (without Mg ²⁺ and Ca ²⁺), pH 7.4, with 150mM NaCl, 0.02% Sodium Azide, and 50% Glycerol.
Storage:	Shipped at 4°C. Upon delivery aliquot and store at -20°C. Avoid freeze / thaw cycles.
Disclaimer:	This product is for research use only. It is not intended for diagnostic or therapeutic use.

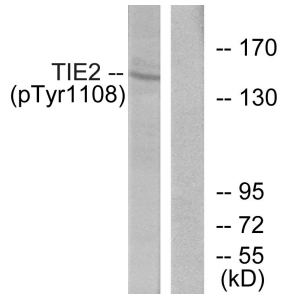
Images:



Immunofluorescence analysis of HepG2 cells using Anti-TIE2 (phospho Tyr1108) Antibody. The right hand panel represents a negative control, where the antibody was pre-incubated with the immunising peptide.

Anti-TIE2 (phospho Tyr1108) Antibody (A93812)

Images continued:



Western blot analysis of lysates from NIH/3T3 cells using Anti-TIE2 (phospho Tyr1108) Antibody. The right hand lane represents a negative control, where the antibody is blocked by the immunising peptide.