

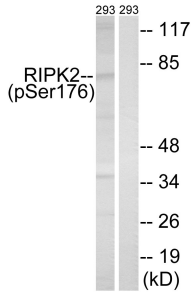
Anti-RIPK2 (phospho Ser176) Antibody (A93819)

Specifications:

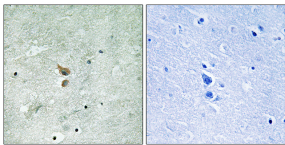
Name:	Anti-RIPK2 (phospho Ser176) Antibody
Description:	Rabbit polyclonal antibody to RIPK2 (phospho Ser176).
Specificity:	This antibody detects endogenous levels of RIPK2 only when phosphorylated at Ser176.
Applications:	WB, IHC, ELISA
Recommended Dilutions:	WB: 1:500-1:1000, ELISA: 1:10000
Reactivity:	Human, Mouse
Immunogen:	Synthetic peptide derived from human RIPK2 around the phosphorylation site of Ser176 (amino acids 146-195).
Host:	Rabbit
Clonality:	Polyclonal
Isotype:	IgG
Conjugate:	Unconjugated
Purification:	Purified from rabbit serum by antigen affinity chromatography using the immunizing phospho peptide.
Molecular Weight:	61kDa
Product Form:	Liquid
Formulation:	Supplied in Phosphate Buffered Saline (without Mg ²⁺ and Ca ²⁺), pH 7.4, with 150mM NaCl, 0.02% Sodium Azide, and 50% Glycerol.
Storage:	Shipped at 4°C. Upon delivery aliquot and store at -20°C. Avoid freeze / thaw cycles.
Disclaimer:	This product is for research use only. It is not intended for diagnostic or therapeutic use.

Anti-RIPK2 (phospho Ser176) Antibody (A93819)

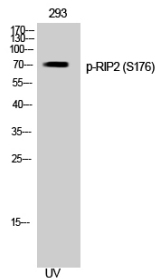
Images:



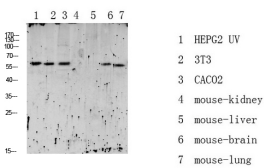
Western blot analysis of lysates from 293 cells treated with UV 15' using Anti-RIPK2 (phospho Ser176) Antibody. The right hand lane represents a negative control, where the antibody is blocked by the immunising peptide.



Immunohistochemical analysis of paraffin-embedded human brain using Anti-RIPK2 (phospho Ser176) Antibody. The right hand panel represents a negative control, where the antibody was pre-incubated with the immunising peptide.



Western blot analysis of 293 cells using Anti-RIPK2 (phospho Ser176) Antibody.



Western blot analysis of various lysate using Anti-RIPK2 (phospho Ser176) Antibody.