

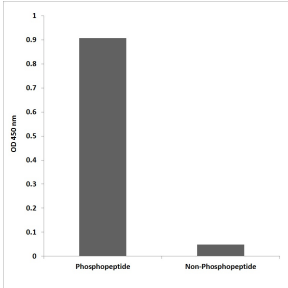
## Anti-IRS-1 (phospho Tyr896) Antibody (A93833)

### Specifications:

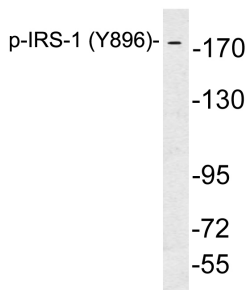
Name:	Anti-IRS-1 (phospho Tyr896) Antibody
Description:	Rabbit polyclonal antibody to IRS-1 (phospho Tyr896).
Specificity:	This antibody detects endogenous levels of IRS-1 only when phosphorylated at Tyr896.
Applications:	WB, ELISA
Recommended Dilutions:	WB: 1:500-1:1000, ELISA: 1:40000
Reactivity:	Human, Mouse, Rat
Immunogen:	Synthetic phospho-peptide derived from human IRS-1 around the phosphorylation site of Tyr896.
Host:	Rabbit
Clonality:	Polyclonal
Isotype:	IgG
Conjugate:	Unconjugated
Purification:	Purified from rabbit serum by antigen affinity chromatography using the immunizing phospho peptide.
Molecular Weight:	131kDa
Product Form:	Liquid
Formulation:	Supplied in Phosphate Buffered Saline (without Mg <sup>2+</sup> and Ca <sup>2+</sup> ), pH 7.4, with 150mM NaCl, 0.02% Sodium Azide, and 50% Glycerol.
Storage:	Shipped at 4°C. Upon delivery aliquot and store at -20°C. Avoid freeze / thaw cycles.
Disclaimer:	This product is for research use only. It is not intended for diagnostic or therapeutic use.

## Anti-IRS-1 (phospho Tyr896) Antibody (A93833)

### Images:



ELISA for immunogen phosphopeptide (left) and non-phosphopeptide (right) using Anti-IRS-1 (phospho Tyr896) Antibody.



Western blot analysis of lysates from 293 cells treated with UV using Anti-IRS-1 (phospho Tyr896) Antibody.