

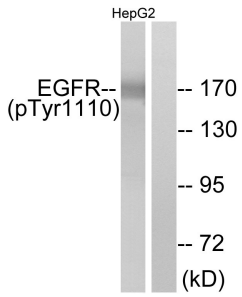
## Anti-EGFR (phospho Tyr1110) Antibody (A93859)

### Specifications:

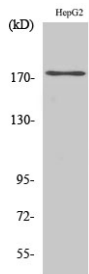
Name:	Anti-EGFR (phospho Tyr1110) Antibody
Description:	Rabbit polyclonal antibody to EGFR (phospho Tyr1110).
Specificity:	This antibody detects endogenous levels of EGFR only when phosphorylated at Tyr1110.
Applications:	WB, ELISA
Recommended Dilutions:	WB: 1:500-1:1000, ELISA: 1:10000
Reactivity:	Human, Mouse, Rat
Immunogen:	Synthetic peptide derived from human EGFR around the phosphorylation site of Tyr1110 (amino acids 1077-1126).
Host:	Rabbit
Clonality:	Polyclonal
Isotype:	IgG
Conjugate:	Unconjugated
Purification:	Purified from rabbit serum by antigen affinity chromatography using the immunizing phospho peptide.
Molecular Weight:	134kDa
Product Form:	Liquid
Formulation:	Supplied in Phosphate Buffered Saline (without Mg <sup>2+</sup> and Ca <sup>2+</sup> ), pH 7.4, with 150mM NaCl, 0.02% Sodium Azide, and 50% Glycerol.
Storage:	Shipped at 4°C. Upon delivery aliquot and store at -20°C. Avoid freeze / thaw cycles.
Disclaimer:	This product is for research use only. It is not intended for diagnostic or therapeutic use.

## Anti-EGFR (phospho Tyr1110) Antibody (A93859)

Images:



Western blot analysis of lysates from HepG2 cells using Anti-EGFR (phospho Tyr1110) Antibody. The right hand lane represents a negative control, where the antibody is blocked by the immunising peptide.



Western blot analysis of various cells using Anti-EGFR (phospho Tyr1110) Antibody.