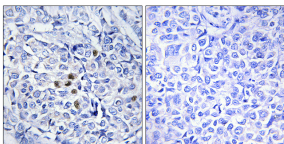


Anti-PLK1 (phospho Thr210) Antibody (A93894)

Specifications:

Name:	Anti-PLK1 (phospho Thr210) Antibody
Description:	Rabbit polyclonal antibody to PLK1 (phospho Thr210).
Specificity:	This antibody detects endogenous levels of PLK1 only when phosphorylated at Thr210.
Applications:	IHC, ELISA
Recommended Dilutions:	IHC: 1:50-1:100, ELISA: 1:1000
Reactivity:	Human, Mouse, Rat
Immunogen:	Synthetic peptide derived from human PLK1 around the phosphorylation site of Thr210 (amino acids 176-225).
Host:	Rabbit
Clonality:	Polyclonal
Isotype:	IgG
Conjugate:	Unconjugated
Purification:	Purified from rabbit serum by antigen affinity chromatography using the immunizing phospho peptide.
Molecular Weight:	68kDa
Product Form:	Liquid
Formulation:	Supplied in Phosphate Buffered Saline (without Mg ²⁺ and Ca ²⁺), pH 7.4, with 150mM NaCl, 0.02% Sodium Azide, and 50% Glycerol.
Storage:	Shipped at 4°C. Upon delivery aliquot and store at -20°C. Avoid freeze / thaw cycles.
Disclaimer:	This product is for research use only. It is not intended for diagnostic or therapeutic use.

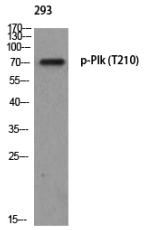
Images:



Immunohistochemical analysis of paraffin-embedded human breast carcinoma using Anti-PLK1 (phospho Thr210) Antibody. The right hand panel represents a negative control, where the antibody was pre-incubated with the immunising peptide.

Anti-PLK1 (phospho Thr210) Antibody (A93894)

Images continued:



Western blot analysis of 293 using Anti-PLK1 (phospho Thr210) Antibody.