

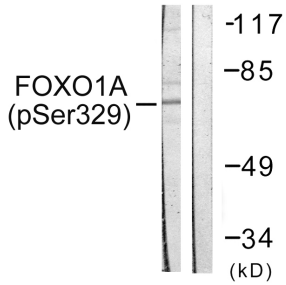
Anti-FOXO1A (phospho Ser329) Antibody (A93974)

Specifications:

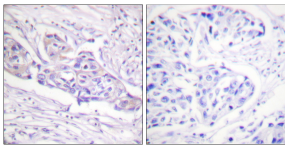
Name:	Anti-FOXO1A (phospho Ser329) Antibody
Description:	Rabbit polyclonal antibody to FOXO1A (phospho Ser329).
Specificity:	This antibody detects endogenous levels of FOXO1A only when phosphorylated at Ser329.
Applications:	WB, IHC, ELISA
Recommended Dilutions:	WB: 1:500-1:1000, IHC: 1:50-1:100, ELISA: 1:1000
Reactivity:	Human, Mouse, Rat
Immunogen:	Synthetic peptide derived from human FOXO1A around the phosphorylation site of Ser329 (amino acids 295-344).
Host:	Rabbit
Clonality:	Polyclonal
Isotype:	IgG
Conjugate:	Unconjugated
Purification:	The antibody was affinity-purified from rabbit antiserum by affinity-chromatography using epitope-specific peptide.
Molecular Weight:	69kDa
Product Form:	Liquid
Formulation:	Supplied in Phosphate Buffered Saline (without Mg ²⁺ and Ca ²⁺), pH 7.4, with 150mM NaCl, 0.02% Sodium Azide, and 50% Glycerol.
Storage:	Shipped at 4°C. Upon delivery aliquot and store at -20°C. Avoid freeze / thaw cycles.
Disclaimer:	This product is for research use only. It is not intended for diagnostic or therapeutic use.

Anti-FOXO1A (phospho Ser329) Antibody (A93974)

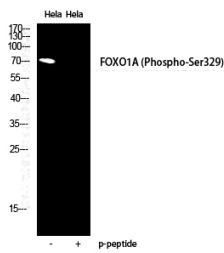
Images:



Western blot analysis of lysates from HeLa cells treated with Serum 20% 15' using Anti-FOXO1A (phospho Ser329) Antibody. The right hand lane represents a negative control, where the antibody is blocked by the immunising peptide.



Immunohistochemical analysis of paraffin-embedded human breast carcinoma using Anti-FOXO1A (phospho Ser329) Antibody. The right hand panel represents a negative control, where the antibody was pre-incubated with the immunising peptide.



Western blot analysis of HELA cells using Anti-FOXO1A (phospho Ser329) Antibody.