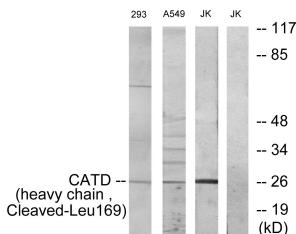


Anti-CATD (heavy chain,cleaved Leu169) Antibody (A93988)

Specifications:

| | |
|------------------------|--|
| Name: | Anti-CATD (heavy chain,cleaved Leu169) Antibody |
| Description: | Rabbit polyclonal antibody to CATD (heavy chain,cleaved Leu169). |
| Specificity: | This antibody detects endogenous levels of fragment of activated CATD resulting from cleavage adjacent to Leu169. |
| Applications: | WB, ELISA |
| Recommended Dilutions: | WB: 1:500-1:1000, ELISA: 1:10000 |
| Reactivity: | Human |
| Immunogen: | Synthetic peptide derived from human CATD (amino acids 150-199). |
| Host: | Rabbit |
| Clonality: | Polyclonal |
| Isotype: | IgG |
| Conjugate: | Unconjugated |
| Purification: | Purified from rabbit serum by antigen affinity chromatography using the immunizing phospho peptide. |
| Molecular Weight: | 27kDa |
| Product Form: | Liquid |
| Formulation: | Supplied in Phosphate Buffered Saline (without Mg ²⁺ and Ca ²⁺), pH 7.4, with 150mM NaCl, 0.02% Sodium Azide, and 50% Glycerol. |
| Storage: | Shipped at 4°C. Upon delivery aliquot and store at -20°C. Avoid freeze / thaw cycles. |
| Disclaimer: | This product is for research use only. It is not intended for diagnostic or therapeutic use. |

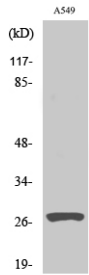
Images:



Western blot analysis of lysates from 293, A549, and JurKat cells, treated with etoposide 25uM 1h using Anti-CATD (heavy chain,cleaved Leu169) Antibody. The right hand lane represents a negative control, where the antibody is blocked by the immunising peptide.

Anti-CATD (heavy chain,cleaved Leu169) Antibody (A93988)

Images continued:



Western blot analysis of various cells using Anti-CATD (heavy chain,cleaved Leu169) Antibody.