

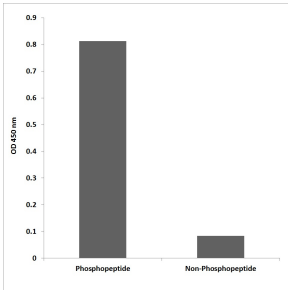
Anti-PLK1 (phospho Ser137) Antibody (A94021)

Specifications:

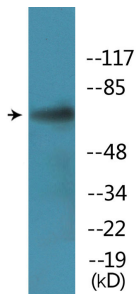
Name:	Anti-PLK1 (phospho Ser137) Antibody
Description:	Rabbit polyclonal antibody to PLK1 (phospho Ser137).
Specificity:	This antibody detects endogenous levels of PLK1 only when phosphorylated at Ser137.
Applications:	WB, ELISA
Recommended Dilutions:	WB: 1:500-1:1000, ELISA: 1:10000
Reactivity:	Human, Mouse, Rat
Immunogen:	Synthetic phospho-peptide derived from human PLK1 around the phosphorylation site of Ser137.
Host:	Rabbit
Clonality:	Polyclonal
Isotype:	IgG
Conjugate:	Unconjugated
Purification:	Purified from rabbit serum by antigen affinity chromatography using the immunizing phospho peptide.
Molecular Weight:	68kDa
Product Form:	Liquid
Formulation:	Supplied in Phosphate Buffered Saline (without Mg ²⁺ and Ca ²⁺), pH 7.4, with 150mM NaCl, 0.02% Sodium Azide, and 50% Glycerol.
Storage:	Shipped at 4°C. Upon delivery aliquot and store at -20°C. Avoid freeze / thaw cycles.
Disclaimer:	This product is for research use only. It is not intended for diagnostic or therapeutic use.

Anti-PLK1 (phospho Ser137) Antibody (A94021)

Images:



ELISA for immunogen phosphopeptide (left) and non-phosphopeptide (right) using Anti-PLK1 (phospho Ser137) Antibody.



Western blot analysis of lysates from Jurkat cells treated with PMA using Anti-PLK1 (phospho Ser137) Antibody.