

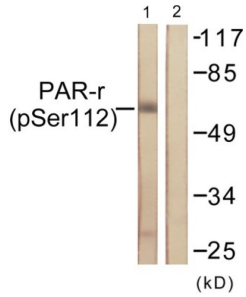
## Anti-PPAR-gamma (phospho Ser112) Antibody (A94143)

### Specifications:

|                        |  |
|------------------------|--|
| Name:                  | Anti-PPAR-gamma (phospho Ser112) Antibody  |
| Description:           | Rabbit polyclonal antibody to PPAR-gamma (phospho Ser112).   |
| Specificity:           | This antibody detects endogenous levels of PPAR-gamma only when phosphorylated at Ser112.  |
| Applications:          | WB, ELISA  |
| Recommended Dilutions: | IF: 1:100-1:500, ELISA: 1:1000   |
| Reactivity:            | Human, Mouse, Rat  |
| Immunogen:             | Synthetic peptide derived from human PPAR-gamma around the phosphorylation site of Ser112 (amino acids 78-127).  |
| Host:                  | Rabbit   |
| Clonality:             | Polyclonal   |
| Isotype:               | IgG  |
| Conjugate:             | Unconjugated   |
| Purification:          | Purified from rabbit serum by antigen affinity chromatography using the immunizing phospho peptide.  |
| Molecular Weight:      | 57kDa  |
| Product Form:          | Liquid   |
| Formulation:           | Supplied in Phosphate Buffered Saline (without Mg <sup>2+</sup> and Ca <sup>2+</sup> ), pH 7.4, with 150mM NaCl, 0.02% Sodium Azide, and 50% Glycerol. |
| Storage:               | Shipped at 4°C. Upon delivery aliquot and store at -20°C. Avoid freeze / thaw cycles.  |
| Disclaimer:            | This product is for research use only. It is not intended for diagnostic or therapeutic use.   |

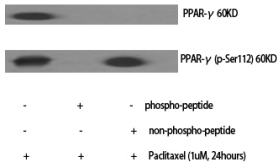
## Anti-PPAR-gamma (phospho Ser112) Antibody (A94143)

Images:



Western blot analysis of lysates from Jurkat cells treated with Paclitaxel 1uM 24h using Anti-PPAR-gamma (phospho Ser112) Antibody. The right hand lane represents a negative control, where the antibody is blocked by the immunising peptide.

Western blot analysis of various cells using Anti-PPAR-gamma (phospho Ser112) Antibody.



Western blot analysis of PC 3 cells using Anti-PPAR-gamma (phospho Ser112) Antibody.

