

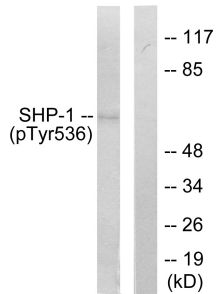
Anti-SHP-1 (phospho Tyr536) Antibody (A94172)

Specifications:

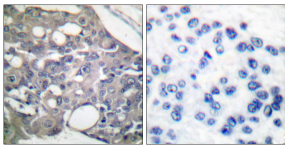
Name:	Anti-SHP-1 (phospho Tyr536) Antibody
Description:	Rabbit polyclonal antibody to SHP-1 (phospho Tyr536).
Specificity:	This antibody detects endogenous levels of SHP-1 only when phosphorylated at Tyr536.
Applications:	WB, IHC, ELISA
Recommended Dilutions:	WB: 1:500-1:1000, ELISA: 1:5000
Reactivity:	Human, Mouse, Rat
Immunogen:	Synthetic peptide derived from human SHP-1 around the phosphorylation site of Tyr536 (amino acids 502-551).
Host:	Rabbit
Clonality:	Polyclonal
Isotype:	IgG
Conjugate:	Unconjugated
Purification:	Purified from rabbit serum by antigen affinity chromatography using the immunizing phospho peptide.
Molecular Weight:	67kDa
Product Form:	Liquid
Formulation:	Supplied in Phosphate Buffered Saline (without Mg ²⁺ and Ca ²⁺), pH 7.4, with 150mM NaCl, 0.02% Sodium Azide, and 50% Glycerol.
Storage:	Shipped at 4°C. Upon delivery aliquot and store at -20°C. Avoid freeze / thaw cycles.
Disclaimer:	This product is for research use only. It is not intended for diagnostic or therapeutic use.

Anti-SHP-1 (phospho Tyr536) Antibody (A94172)

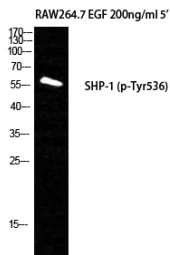
Images:



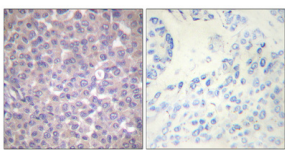
Western blot analysis of lysates from RAW264.7 cells treated with EGF 200ng/ml 5' using Anti-SHP-1 (phospho Tyr536) Antibody. The right hand lane represents a negative control, where the antibody is blocked by the immunising peptide.



Immunohistochemical analysis of paraffin-embedded human breast carcinoma using Anti-SHP-1 (phospho Tyr536) Antibody. The right hand panel represents a negative control, where the antibody was pre-incubated with the immunising peptide.



Western blot analysis of RAW264.7 + EGF cells using Anti-SHP-1 (phospho Tyr536) Antibody.



Immunohistochemical analysis of paraffin-embedded human breast cancer using Anti-SHP-1 (phospho Tyr536) Antibody 1:100 (4°C overnight). The right hand panel represents a negative control, where the antibody was pre-incubated with the immunising peptide.