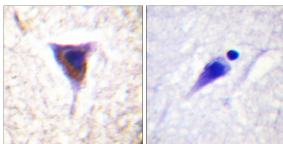


## Anti-mTOR (phospho Ser2481) Antibody (A94182)

### Specifications:

Name:	Anti-mTOR (phospho Ser2481) Antibody
Description:	Rabbit polyclonal antibody to mTOR (phospho Ser2481).
Specificity:	This antibody detects endogenous levels of mTOR only when phosphorylated at Ser2481.
Applications:	IHC, IF, ELISA
Recommended Dilutions:	WB: 1:500-1:1000, ELISA: 1:10000
Reactivity:	Human, Mouse, Rat
Immunogen:	Synthetic peptide derived from human mTOR around the phosphorylation site of Ser2481 (amino acids 2447-2496).
Host:	Rabbit
Clonality:	Polyclonal
Isotype:	IgG
Conjugate:	Unconjugated
Purification:	Purified from rabbit serum by antigen affinity chromatography using the immunizing phospho peptide.
Molecular Weight:	288kDa
Product Form:	Liquid
Formulation:	Supplied in Phosphate Buffered Saline (without Mg <sup>2+</sup> and Ca <sup>2+</sup> ), pH 7.4, with 150mM NaCl, 0.02% Sodium Azide, and 50% Glycerol.
Storage:	Shipped at 4°C. Upon delivery aliquot and store at -20°C. Avoid freeze / thaw cycles.
Disclaimer:	This product is for research use only. It is not intended for diagnostic or therapeutic use.

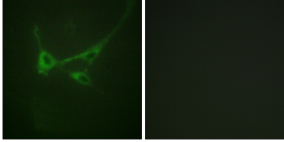
### Images:



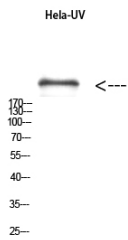
Immunohistochemical analysis of paraffin-embedded human brain using Anti-mTOR (phospho Ser2481) Antibody. The right hand panel represents a negative control, where the antibody was pre-incubated with the immunising peptide.

## Anti-mTOR (phospho Ser2481) Antibody (A94182)

Images continued:



Immunofluorescence analysis of NIH/3T3 cells using Anti-mTOR (phospho Ser2481) Antibody. The right hand panel represents a negative control, where the antibody was pre-incubated with the immunising peptide.



Western blot analysis of hela UV using Anti-mTOR (phospho Ser2481) Antibody.