

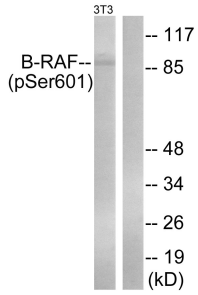
Anti-B-RAF (phospho Ser602) Antibody (A94214)

Specifications:

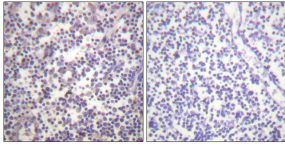
Name:	Anti-B-RAF (phospho Ser602) Antibody
Description:	Rabbit polyclonal antibody to B-RAF (phospho Ser602).
Specificity:	This antibody detects endogenous levels of B-RAF only when phosphorylated at Ser602.
Applications:	WB, IHC, ELISA
Recommended Dilutions:	IHC: 1:50-1:100, ELISA: 1:40000
Reactivity:	Human, Mouse, Rat
Immunogen:	Synthetic peptide derived from human B-RAF around the phosphorylation site of Ser602 (amino acids 576-625).
Host:	Rabbit
Clonality:	Polyclonal
Isotype:	IgG
Conjugate:	Unconjugated
Purification:	Purified from rabbit serum by antigen affinity chromatography using the immunizing phospho peptide.
Molecular Weight:	84kDa
Product Form:	Liquid
Formulation:	Supplied in Phosphate Buffered Saline (without Mg ²⁺ and Ca ²⁺), pH 7.4, with 150mM NaCl, 0.02% Sodium Azide, and 50% Glycerol.
Storage:	Shipped at 4°C. Upon delivery aliquot and store at -20°C. Avoid freeze / thaw cycles.
Disclaimer:	This product is for research use only. It is not intended for diagnostic or therapeutic use.

Anti-B-RAF (phospho Ser602) Antibody (A94214)

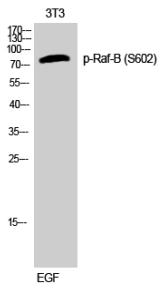
Images:



Western blot analysis of lysates from NIH/3T3 cells treated with EGF 200ng/ml 30' using Anti-B-RAF (phospho Ser602) Antibody. The right hand lane represents a negative control, where the antibody is blocked by the immunising peptide.



Immunohistochemical analysis of paraffin-embedded human lymph node using Anti-B-RAF (phospho Ser602) Antibody. The right hand panel represents a negative control, where the antibody was pre-incubated with the immunising peptide.



Western blot analysis of 3T3 cells using Anti-B-RAF (phospho Ser602) Antibody.