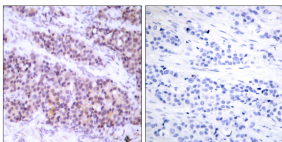


Anti-BCL-XL (phospho Ser62) Antibody (A94215)

Specifications:

Name:	Anti-BCL-XL (phospho Ser62) Antibody
Description:	Rabbit polyclonal antibody to BCL-XL (phospho Ser62).
Specificity:	This antibody detects endogenous levels of BCL-XL only when phosphorylated at Ser62.
Applications:	WB, IHC, ELISA
Recommended Dilutions:	WB: 1:500-1:1000, IHC: 1:50-1:100, IF: 1:100-1:500, ELISA: 1:40000
Reactivity:	Human, Mouse, Rat
Immunogen:	Synthetic peptide derived from human BCL-XL around the phosphorylation site of Ser62 (amino acids 28-77).
Host:	Rabbit
Clonality:	Polyclonal
Isotype:	IgG
Conjugate:	Unconjugated
Purification:	Purified from rabbit serum by antigen affinity chromatography using the immunizing phospho peptide.
Molecular Weight:	26kDa
Product Form:	Liquid
Formulation:	Supplied in Phosphate Buffered Saline (without Mg ²⁺ and Ca ²⁺), pH 7.4, with 150mM NaCl, 0.02% Sodium Azide, and 50% Glycerol.
Storage:	Shipped at 4°C. Upon delivery aliquot and store at -20°C. Avoid freeze / thaw cycles.
Disclaimer:	This product is for research use only. It is not intended for diagnostic or therapeutic use.

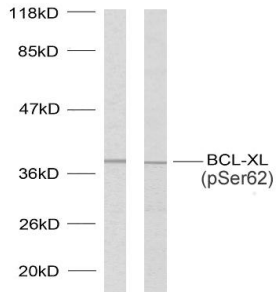
Images:



Immunohistochemical analysis of paraffin-embedded human breast carcinoma using Anti-BCL-XL (phospho Ser62) Antibody. The right hand panel represents a negative control, where the antibody was pre-incubated with the immunising peptide.

Anti-BCL-XL (phospho Ser62) Antibody (A94215)

Images continued:



Western blot analysis of lysates from 293 cells treated with UV and MDA MB 435 cells treated with UV using Anti-BCL-XL (phospho Ser62) Antibody.