

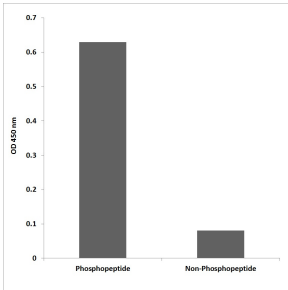
Anti-M-CSF Receptor (phospho Tyr723) Antibody (A94355)

Specifications:

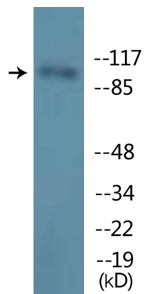
Name:	Anti-M-CSF Receptor (phospho Tyr723) Antibody
Description:	Rabbit polyclonal antibody to M-CSF Receptor (phospho Tyr723).
Specificity:	This antibody detects endogenous levels of CSF1R only when phosphorylated at Tyr723.
Applications:	WB, IHC, ELISA
Recommended Dilutions:	WB: 1:500-1:1000, IHC: 1:50-1:100, ELISA: 1:10000
Reactivity:	Human, Mouse, Rat
Immunogen:	Synthetic phospho-peptide derived from human M-CSF Receptor around the phosphorylation site of Tyr723.
Host:	Rabbit
Clonality:	Polyclonal
Isotype:	IgG
Conjugate:	Unconjugated
Purification:	Purified from rabbit serum by antigen affinity chromatography using the immunizing phospho peptide.
Molecular Weight:	107kDa
Product Form:	Liquid
Formulation:	Supplied in Phosphate Buffered Saline (without Mg ²⁺ and Ca ²⁺), pH 7.4, with 150mM NaCl, 0.02% Sodium Azide, and 50% Glycerol.
Storage:	Shipped at 4°C. Upon delivery aliquot and store at -20°C. Avoid freeze / thaw cycles.
Disclaimer:	This product is for research use only. It is not intended for diagnostic or therapeutic use.

Anti-M-CSF Receptor (phospho Tyr723) Antibody (A94355)

Images:



ELISA for immunogen phosphopeptide (left) and non-phosphopeptide (right) using Anti-M-CSF Receptor (phospho Tyr723) Antibody.



Western blot analysis of lysates from HUVEC cells treated with PMA 125ng/ml 30' using Anti-M-CSF Receptor (phospho Tyr723) Antibody.