

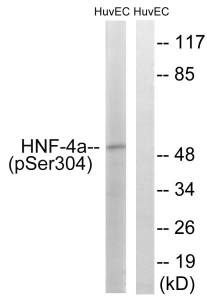
Anti-HNF4 alpha (phospho Ser313) Antibody (A94360)

Specifications:

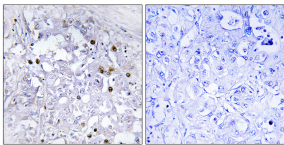
Name:	Anti-HNF4 alpha (phospho Ser313) Antibody
Description:	Rabbit polyclonal antibody to HNF4 alpha (phospho Ser313).
Specificity:	This antibody detects endogenous levels of HNF4 alpha only when phosphorylated at Ser313.
Applications:	WB, IHC, IF, ELISA
Recommended Dilutions:	IHC: 1:50-1:100, ELISA: 1:10000
Reactivity:	Human, Mouse, Rat
Immunogen:	Synthetic peptide derived from human HNF4 alpha around the phosphorylation site of Ser313 (amino acids 280-329).
Host:	Rabbit
Clonality:	Polyclonal
Isotype:	IgG
Conjugate:	Unconjugated
Purification:	Purified from rabbit serum by antigen affinity chromatography using the immunizing peptide.
Molecular Weight:	52kDa
Product Form:	Liquid
Formulation:	Supplied in Phosphate Buffered Saline (without Mg ²⁺ and Ca ²⁺), pH 7.4, with 150mM NaCl, 0.02% Sodium Azide, and 50% Glycerol.
Storage:	Shipped at 4°C. Upon delivery aliquot and store at -20°C. Avoid freeze / thaw cycles.
Disclaimer:	This product is for research use only. It is not intended for diagnostic or therapeutic use.

Anti-HNF4 alpha (phospho Ser313) Antibody (A94360)

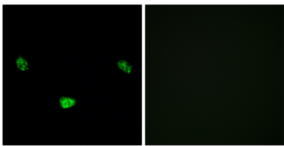
Images:



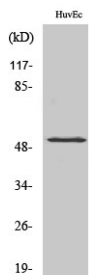
Western blot analysis of lysates from HUVEC cells treated with EGF 200ng/ml 30' using Anti-HNF4 alpha (phospho Ser313) Antibody. The right hand lane represents a negative control, where the antibody is blocked by the immunising peptide.



Immunohistochemical analysis of paraffin-embedded human liver carcinoma using Anti-HNF4 alpha (phospho Ser313) Antibody. The right hand panel represents a negative control, where the antibody was pre-incubated with the immunising peptide.



Immunofluorescence analysis of LOVO cells using Anti-HNF4 alpha (phospho Ser313) Antibody. The right hand panel represents a negative control, where the antibody was pre-incubated with the immunising peptide.



Western blot analysis of various cells using Anti-HNF4 alpha (phospho Ser313) Antibody.