

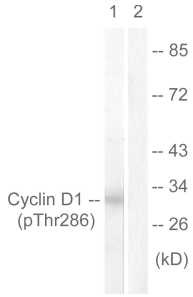
## Anti-Cyclin D1 (phospho Thr286) Antibody (A94375)

### Specifications:

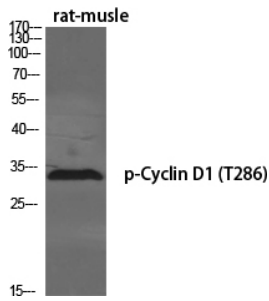
Name:	Anti-Cyclin D1 (phospho Thr286) Antibody
Description:	Rabbit polyclonal antibody to Cyclin D1 (phospho Thr286).
Specificity:	This antibody detects endogenous levels of Cyclin D1 only when phosphorylated at Thr286.
Applications:	WB, ELISA
Recommended Dilutions:	WB: 1:500-1:1000, IHC: 1:50-1:100, ELISA: 1:1000
Reactivity:	Human, Mouse, Rat
Immunogen:	Synthetic peptide derived from human Cyclin D1 around the phosphorylation site of Thr286 (amino acids 246-295).
Host:	Rabbit
Clonality:	Polyclonal
Isotype:	IgG
Conjugate:	Unconjugated
Purification:	Purified from rabbit serum by antigen affinity chromatography using the immunizing phospho peptide.
Molecular Weight:	33kDa
Product Form:	Liquid
Formulation:	Supplied in Phosphate Buffered Saline (without Mg <sup>2+</sup> and Ca <sup>2+</sup> ), pH 7.4, with 150mM NaCl, 0.02% Sodium Azide, and 50% Glycerol.
Storage:	Shipped at 4°C. Upon delivery aliquot and store at -20°C. Avoid freeze / thaw cycles.
Disclaimer:	This product is for research use only. It is not intended for diagnostic or therapeutic use.

## Anti-Cyclin D1 (phospho Thr286) Antibody (A94375)

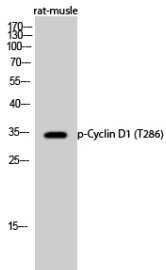
### Images:



Western blot analysis of lysates from Jurkat cells treated with EGF 200ng/ml 30' using Anti-Cyclin D1 (phospho Thr286) Antibody. The right hand lane represents a negative control, where the antibody is blocked by the immunising peptide.



Western blot analysis of various cells using Anti-Cyclin D1 (phospho Thr286) Antibody.



Western blot analysis of rat muscle cells using Anti-Cyclin D1 (phospho Thr286) Antibody.