

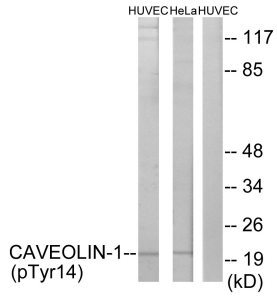
Anti-Caveolin-1 (phospho Tyr14) Antibody (A94378)

Specifications:

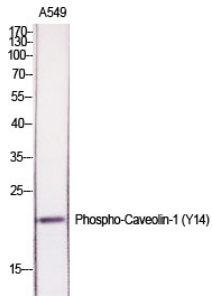
Name:	Anti-Caveolin-1 (phospho Tyr14) Antibody
Description:	Rabbit polyclonal antibody to Caveolin-1 (phospho Tyr14).
Specificity:	This antibody detects endogenous levels of Caveolin-1 only when phosphorylated at Tyr14.
Applications:	WB, ELISA
Recommended Dilutions:	WB: 1:500-1:1000, ELISA: 1:10000
Reactivity:	Human, Mouse, Rat
Immunogen:	Synthetic peptide derived from human Caveolin-1 around the phosphorylation site of Tyr14 (amino acids 5-54).
Host:	Rabbit
Clonality:	Polyclonal
Isotype:	IgG
Conjugate:	Unconjugated
Purification:	Purified from rabbit serum by antigen affinity chromatography using the immunizing peptide.
Molecular Weight:	20kDa
Product Form:	Liquid
Formulation:	Supplied in Phosphate Buffered Saline (without Mg ²⁺ and Ca ²⁺), pH 7.4, with 150mM NaCl, 0.02% Sodium Azide, and 50% Glycerol.
Storage:	Shipped at 4°C. Upon delivery aliquot and store at -20°C. Avoid freeze / thaw cycles.
Disclaimer:	This product is for research use only. It is not intended for diagnostic or therapeutic use.

Anti-Caveolin-1 (phospho Tyr14) Antibody (A94378)

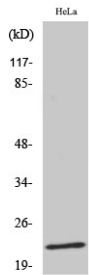
Images:



Western blot analysis of lysates from HUVEC cells treated with PMA 125ng/ml 30' and HeLa cells treated with LPS 100ng/ml 30' using Anti-Caveolin-1 (phospho Tyr14) Antibody. The right hand lane represents a negative control, where the antibody is blocked by the immunising peptide.



Western blot analysis of various cells using Anti-Caveolin-1 (phospho Tyr14) Antibody.



Western blot analysis of HeLa cells using Anti-Caveolin-1 (phospho Tyr14) Antibody.