

Anti-PTEN (phospho Ser370) Antibody (A94415)

Specifications:

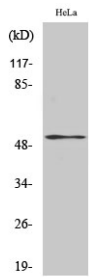
Name:	Anti-PTEN (phospho Ser370) Antibody
Description:	Rabbit polyclonal antibody to PTEN (phospho Ser370).
Specificity:	This antibody detects endogenous levels of PTEN only when phosphorylated at Ser370.
Applications:	WB, IHC, ELISA
Recommended Dilutions:	WB: 1:500-1:1000, IHC-P: 1:50-1:100, ELISA: 1:5000
Reactivity:	Human, Mouse, Rat
Immunogen:	Synthetic peptide derived from human PTEN around the phosphorylation site of Ser370. (amino acids 355-385).
Host:	Rabbit
Clonality:	Polyclonal
Isotype:	IgG
Conjugate:	Unconjugated
Purification:	The antibody was affinity-purified from rabbit antiserum by affinity-chromatography using epitope-specific peptide.
Molecular Weight:	47kDa
Product Form:	Liquid
Formulation:	Supplied in Phosphate Buffered Saline (without Mg ²⁺ and Ca ²⁺), pH 7.4, with 150mM NaCl, 0.02% Sodium Azide, and 50% Glycerol.
Storage:	Shipped at 4°C. Upon delivery aliquot and store at -20°C. Avoid freeze / thaw cycles.
Disclaimer:	This product is for research use only. It is not intended for diagnostic or therapeutic use.

Anti-PTEN (phospho Ser370) Antibody (A94415)

Images:



Western blot analysis of lysates from HeLa cells treated with Vanadate using Anti-PTEN (phospho Ser370) Antibody. The right hand lane represents a negative control, where the antibody is blocked by the immunising peptide.



Western blot analysis of various cells using Anti-PTEN (phospho Ser370) Antibody.