

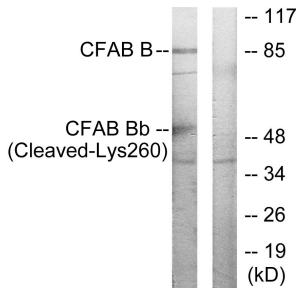
## Anti-CFAB Bb (cleaved Lys260) Antibody (A94484)

### Specifications:

Name:	Anti-CFAB Bb (cleaved Lys260) Antibody
Description:	Rabbit polyclonal antibody to CFAB Bb (cleaved Lys260).
Specificity:	This antibody detects endogenous levels of fragment of activated CFAB Bb resulting from cleavage adjacent to Lys260.
Applications:	WB, ELISA
Recommended Dilutions:	WB: 1:500-1:1000, IHC: 1:50-1:100, IF: 1:100-1:500, ELISA: 1:10000
Reactivity:	Human, Mouse
Immunogen:	Synthetic peptide derived from human CFAB Bb (amino acids 241-290).
Host:	Rabbit
Clonality:	Polyclonal
Isotype:	IgG
Conjugate:	Unconjugated
Purification:	Purified from rabbit serum by antigen affinity chromatography using the immunizing phospho peptide.
Molecular Weight:	57 and 85kDa
Product Form:	Liquid
Formulation:	Supplied in Phosphate Buffered Saline (without Mg <sup>2+</sup> and Ca <sup>2+</sup> ), pH 7.4, with 150mM NaCl, 0.02% Sodium Azide, and 50% Glycerol.
Storage:	Shipped at 4°C. Upon delivery aliquot and store at -20°C. Avoid freeze / thaw cycles.
Disclaimer:	This product is for research use only. It is not intended for diagnostic or therapeutic use.

## Anti-CFAB Bb (cleaved Lys260) Antibody (A94484)

Images:



Western blot analysis of lysates from K562 cells, treated with etoposide 25uM 1h using Anti-CFAB Bb (cleaved Lys260) Antibody. The right hand lane represents a negative control, where the antibody is blocked by the immunising peptide.