

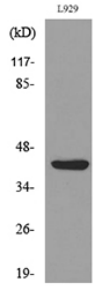
Anti-E2F4 (acetyl Lys96) Antibody (A94507)

Specifications:

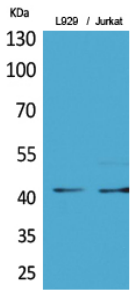
| | |
|------------------------|--|
| Name: | Anti-E2F4 (acetyl Lys96) Antibody |
| Description: | Rabbit polyclonal antibody to E2F4 (acetyl Lys96). |
| Specificity: | This antibody detects endogenous levels of E2F4 protein only when acetylated at Lys96. |
| Applications: | WB, ELISA |
| Recommended Dilutions: | WB: 1:500-1:1000, ELISA: 1:10000 |
| Reactivity: | Human, Mouse, Rat |
| Immunogen: | Synthetic Acetyl-peptide derived from human E2F4 around the Acetylation site of Lys96 (amino acids 61-110). |
| Host: | Rabbit |
| Clonality: | Polyclonal |
| Isotype: | IgG |
| Conjugate: | Unconjugated |
| Purification: | Purified from rabbit serum by antigen affinity chromatography using the immunizing acetylated peptide. |
| Molecular Weight: | 43kDa |
| Product Form: | Liquid |
| Formulation: | Supplied in Phosphate Buffered Saline (without Mg ²⁺ and Ca ²⁺), pH 7.4, with 150mM NaCl, 0.02% Sodium Azide, and 50% Glycerol. |
| Storage: | Shipped at 4°C. Upon delivery aliquot and store at -20°C. Avoid freeze / thaw cycles. |
| Disclaimer: | This product is for research use only. It is not intended for diagnostic or therapeutic use. |

Anti-E2F4 (acetyl Lys96) Antibody (A94507)

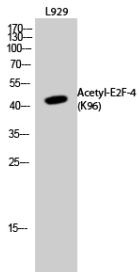
Images:



Western blot analysis of lysate from L929 cells using Anti-E2F4 (acetyl Lys96) Antibody.



Western blot analysis of L929, Jurkat cells using Anti-E2F4 (acetyl Lys96) Antibody.



Western blot analysis of L929 cells using Anti-E2F4 (acetyl Lys96) Antibody.