

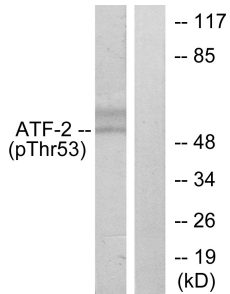
Anti-ATF2 (phospho Thr71 or 53) Antibody (A94578)

Specifications:

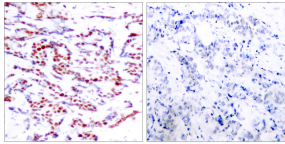
Name:	Anti-ATF2 (phospho Thr71 or 53) Antibody
Description:	Rabbit polyclonal antibody to ATF2 (phospho Thr71 or 53).
Specificity:	This antibody detects endogenous levels of ATF2 only when phosphorylated at Thr71 or 53.
Applications:	WB, IHC, IP, ELISA
Recommended Dilutions:	IHC: 1:50-1:100, ELISA: 1:10000
Reactivity:	Human, Mouse, Rat
Immunogen:	Synthetic peptide derived from human ATF2 around the phosphorylation site of Thr71 or 53 (amino acids 38-87).
Host:	Rabbit
Clonality:	Polyclonal
Isotype:	IgG
Conjugate:	Unconjugated
Purification:	Purified from rabbit serum by antigen affinity chromatography using the immunizing phospho peptide.
Molecular Weight:	52kDa
Product Form:	Liquid
Formulation:	Supplied in Phosphate Buffered Saline (without Mg ²⁺ and Ca ²⁺), pH 7.4, with 150mM NaCl, 0.02% Sodium Azide, and 50% Glycerol.
Storage:	Shipped at 4°C. Upon delivery aliquot and store at -20°C. Avoid freeze / thaw cycles.
Disclaimer:	This product is for research use only. It is not intended for diagnostic or therapeutic use.

Anti-ATF2 (phospho Thr71 or 53) Antibody (A94578)

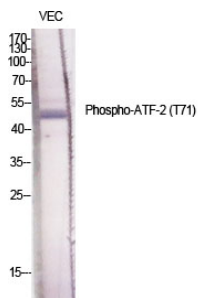
Images:



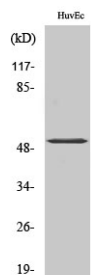
Western blot analysis of lysates from HeLa cells treated with UV using Anti-ATF2 (phospho Thr71 or 53) Antibody. The right hand lane represents a negative control, where the antibody is blocked by the immunising peptide.



Immunohistochemical analysis of paraffin-embedded human breast carcinoma using Anti-ATF2 (phospho Thr71 or 53) Antibody. The right hand panel represents a negative control, where the antibody was pre-incubated with the immunising peptide.



Western blot analysis of various cells using Anti-ATF2 (phospho Thr71 or 53) Antibody.



Western blot analysis of HuvEc cells using Anti-ATF2 (phospho Thr71 or 53) Antibody.