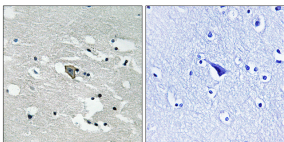


## Anti-VEGFR1 (phospho Tyr1048) Antibody (A94614)

### Specifications:

Name:	Anti-VEGFR1 (phospho Tyr1048) Antibody
Description:	Rabbit polyclonal antibody to VEGFR1 (phospho Tyr1048).
Specificity:	This antibody detects endogenous levels of VEGFR1 only when phosphorylated at Tyr1048.
Applications:	IHC, ELISA
Recommended Dilutions:	WB: 1:500-1:1000, IHC: 1:50-1:100, ELISA: 1:40000
Reactivity:	Human, Mouse, Rat
Immunogen:	Synthetic peptide derived from human VEGFR1 around the phosphorylation site of Tyr1048 (amino acids 1016-1065).
Host:	Rabbit
Clonality:	Polyclonal
Isotype:	IgG
Conjugate:	Unconjugated
Purification:	Purified from rabbit serum by antigen affinity chromatography using the immunizing phospho peptide.
Molecular Weight:	150kDa
Product Form:	Liquid
Formulation:	Supplied in Phosphate Buffered Saline (without Mg <sup>2+</sup> and Ca <sup>2+</sup> ), pH 7.4, with 150mM NaCl, 0.02% Sodium Azide, and 50% Glycerol.
Storage:	Shipped at 4°C. Upon delivery aliquot and store at -20°C. Avoid freeze / thaw cycles.
Disclaimer:	This product is for research use only. It is not intended for diagnostic or therapeutic use.

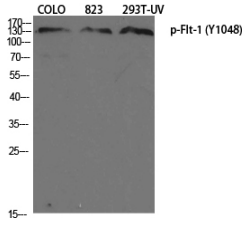
### Images:



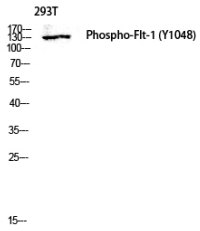
Immunohistochemical analysis of paraffin-embedded human brain using Anti-VEGFR1 (phospho Tyr1048) Antibody. The right hand panel represents a negative control, where the antibody was pre-incubated with the immunising peptide.

# Anti-VEGFR1 (phospho Tyr1048) Antibody (A94614)

Images continued:



Western blot analysis of various cells using Anti-VEGFR1 (phospho Tyr1048) Antibody.



Western blot analysis of 293T lysis using Anti-VEGFR1 (phospho Tyr1048) Antibody.