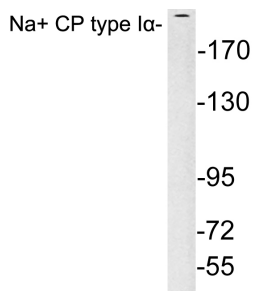


## Anti-Na<sup>+</sup> CP type Ialpha Antibody (A94733)

### Specifications:

Name:	Anti-Na <sup>+</sup> CP type Ialpha Antibody
Description:	Rabbit polyclonal antibody to Na <sup>+</sup> CP type Ialpha.
Applications:	WB, ELISA
Recommended Dilutions:	WB: 1:500-1:1000, ELISA: 1:10000
Reactivity:	Human, Mouse, Rat
Immunogen:	Synthetic peptide derived from human Na <sup>+</sup> CP type Ialpha (amino acids 33-82).
Host:	Rabbit
Clonality:	Polyclonal
Isotype:	IgG
Conjugate:	Unconjugated
Purification:	Purified from rabbit serum by antigen affinity chromatography using the immunizing peptide.
Molecular Weight:	228kDa
Product Form:	Liquid
Formulation:	Supplied in Phosphate Buffered Saline (without Mg <sup>2+</sup> and Ca <sup>2+</sup> ), pH 7.4, with 150mM NaCl, 0.02% Sodium Azide, and 50% Glycerol.
Storage:	Shipped at 4°C. Upon delivery aliquot and store at -20°C. Avoid freeze / thaw cycles.
Disclaimer:	This product is for research use only. It is not intended for diagnostic or therapeutic use.

### Images:



Western blot analysis of lysates from mouse brain tissue using Anti-Na<sup>+</sup> CP type Ialpha Antibody.