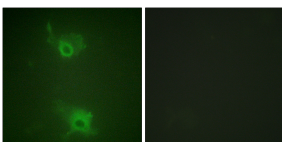


Anti-S1P Receptor EDG1 (phospho Thr236) Antibody (A94780)

Specifications:

Name:	Anti-S1P Receptor EDG1 (phospho Thr236) Antibody
Description:	Rabbit polyclonal antibody to S1P Receptor EDG1 (phospho Thr236).
Specificity:	This antibody detects endogenous levels of S1P Receptor EDG1 only when phosphorylated at Thr236.
Applications:	IF, ELISA
Recommended Dilutions:	WB: 1:500-1:1000, IHC: 1:50-1:100, ELISA: 1:20000
Reactivity:	Human, Mouse, Rat
Immunogen:	Synthetic peptide derived from human S1P Receptor EDG1 around the phosphorylation site of Thr236 (amino acids 206-255).
Host:	Rabbit
Clonality:	Polyclonal
Isotype:	IgG
Conjugate:	Unconjugated
Purification:	Purified from rabbit serum by antigen affinity chromatography using the immunizing phospho peptide.
Concentration:	1mg/ml
Molecular Weight:	42kDa
Product Form:	Liquid
Formulation:	Supplied in Phosphate Buffered Saline (without Mg ²⁺ and Ca ²⁺), pH 7.4, with 150mM NaCl, 0.02% Sodium Azide, and 50% Glycerol.
Storage:	Shipped at 4°C. Upon delivery aliquot and store at -20°C. Avoid freeze / thaw cycles.
Disclaimer:	This product is for research use only. It is not intended for diagnostic or therapeutic use.

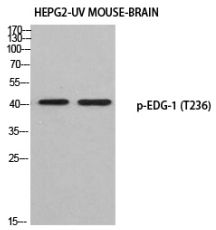
Images:



Immunofluorescence analysis of COS7 cells using Anti-S1P Receptor EDG1 (phospho Thr236) Antibody. The right hand panel represents a negative control, where the antibody was pre-incubated with the immunising peptide.

Anti-S1P Receptor EDG1 (phospho Thr236) Antibody (A94780)

Images continued:



Western blot analysis of HEPG2 UV mouse BRAIN using Anti-S1P Receptor EDG1 (phospho Thr236) Antibody.